

**Chapter 30 Nonvertebrate Chordates, Fishes,
and Amphibians**

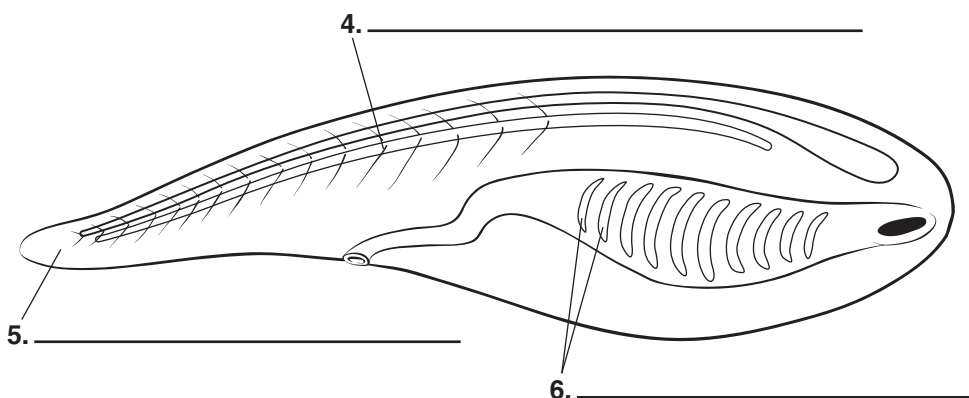
Section Review 30-1

Reviewing Key Concepts

Completion *On the lines provided, complete the following sentences.*

1. In chordates, the hollow structure that runs along the dorsal (back) part of the body is called the _____.
2. In some chordates, such as fishes and amphibians, gills develop from the _____.
3. The long supporting rod in chordates is called a(an) _____.

Identification *On the lines provided, identify the different structures of a chordate.*



Short Answer *On the lines provided, answer the following questions.*

7. How do lancelets and tunicates differ from most chordates?

8. Describe the differences between lancelets and tunicates.

Reviewing Key Skills

9. **Applying Concepts** What chordate characteristic is not displayed in most adult chordates?

10. **Inferring** Suppose you followed the development of an organism through its life cycle. What information would help you determine that it can be classified as a chordate?
