

Chapter 33 Comparing Chordates

Section Review 33-3

Reviewing Key Concepts

Short Answer *On the lines provided, answer the following questions.*

- Describe the differences in the digestive tracts of carnivores and herbivores.

- What are the two respiratory structures typically found in chordates?

- What is the general function of chambers and partitions in the heart?

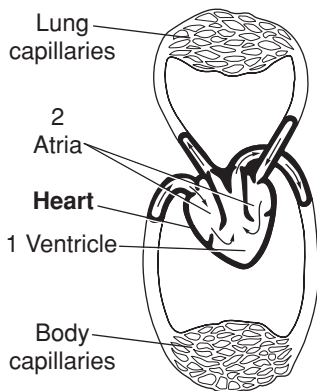
- How do both gills and kidneys function in excretion?

- Describe how the brain structure of nonvertebrate chordates is different from that of vertebrate chordates.

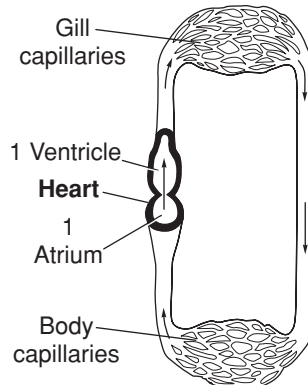
- What structures support a vertebrate's body and allow it to control movement?

Reviewing Key Skills

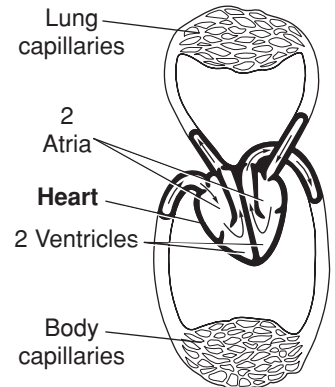
Classifying *On the line below each diagram, classify the diagram as the circulatory system found in a fish, an amphibian, or a mammal.*



7. _____



8. _____



9. _____