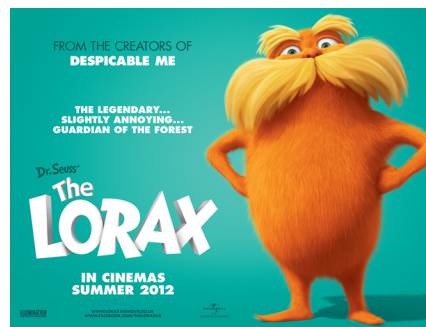


# DR. SUESS...The Lorax



VS



The Lorax By Dr Seuss's (1972)WebRIP XviD\_X-Release

While watching the video...

- 1) make a list of environmental issues presented in the video.
- 2) decide what point of view best suits the video.

## **COMPARE YOUR LIST TO MINE...**

### **Important issues found in The Lorax:**

- urbanization
- habitat destruction
- environmental refugees
- deforestation- clear cutting
- industrialization - smog and health implications
- pollution - air and water
- environmental/ecological restoration
- ecosystem services - forest soil prevents erosion
- food chain association
- tragedy of the commons - "if I don't do it someone else will"
- sustainable yield
- conservation/multiple uses
- biodiversity - impacts of urbanization
- externalities
- environmental degradation - littering
- stewardship

# KEY TERMS...

**NOTES - The Lorax Environmental Issues.docx**

- **urbanization** - process in which an increasing proportion of an entire population lives in cities or suburbs of cities, areas of population dense enough that residents cannot grow their own food.

*NOTE:* **urban** refers to a city and/or densely populated area



- **habitat destruction** - caused by urban sprawl, forest destruction and agricultural practices.

*NOTE:* **habitat** refers to where a species grow, lives and reproduces.



- **environmental refugees** - people forced to leave their homes because of environmental factors such as drought, flooding and the rise of sea levels.



- **ecological restoration** - the process of assisting the recovery of an ecosystem that has been degraded, damaged or destroyed.
- **ecosystem services**: - provide us with clean water and air
  - pollinate our crops and disperse seeds
  - protect us from extreme weather and ultraviolet light
  - control pests and disease-carrying organisms
- **sustainable yield** - the taking of a biological resource that does not exceed the capacity of the resource to reproduce and replace itself.
- **biodiversity** - the variety of living things in the natural world.
- **externality** - something that, while it does not monetarily affect the producer of a good, does influence the standard of living of society as a whole.

**Pollution is a very common negative externality.  
A company that pollutes loses no money in doing so,  
but society must pay heavily to take care of the  
problem pollution caused.**
- **environmental degradation** - the deterioration of the environment through depletion of resources such as air, water and soil.
- **stewardship** - an attitude of active care and concern for natural lands.

## **DISCUSSION to Homework Reflection...**

- how does YOUR personal behavior contribute to any of the issues?
- how should YOU be responsible for solving the issues?
- how should WE (society) be responsible for solving the issues?
- what influence does the economy have on the issues?
- what is meant by sustainable?

## Some current environmental issues...

NB - Alberta Pipeline



Fish Farming...open vs closed contained



'Greener' Superbowl?



NOTES - The Lorax Environmental Issues.docx