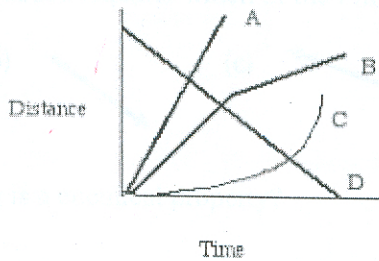


- (c) loses 2 electrons
- (d) gains 2 electrons

14. Which of the following is an example of speed?
- (a) 40 km
 - (b) 20 km/h[E]
 - (c) 1.5 m [right]
 - (d) 15 km/h

15. Which of the following graphs illustrates an object that is speeding up?



- (a) A
- (b) B
- (c) C
- (d) D

16. Boron-11 has ___ neutrons.

- (a) 11
- (b) 6
- (c) 5
- (d) 3

$$\frac{11}{5}B$$
$$\frac{6}{6}$$

17. Which statement concerning electric charges is true?
- (a) There is one type of electric charge.
 - (b) There are two types of electric charge.
 - (c) There are three types of electric charge.
 - (d) There are four types of electric charge.

