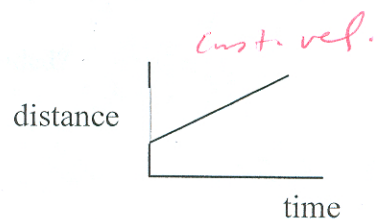
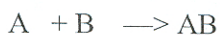


28. A positive slope on a distance-time graph indicates:
- (a) the object's speed is increasing.
 - (b) the object is not moving.
 - (c) the object's speed is decreasing.
 - (d) the object has a constant speed.



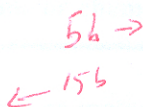
29. The reaction below is an example of the reaction type called:



- (a) combustion
- (b) decomposition
- (c) synthesis
- (d) single displacement

30. An element that does form a diatomic molecule is
- (a) iodine
 - (b) sulfur
 - (c) phosphorous
 - (d) hydrogen

31. John walks to his friend's house 5 blocks east and then walks home again 15 blocks west. His displacement is
- (a) 10 blocks
 - (b) zero blocks
 - (c) 10 blocks [E]
 - (d) 10 blocks [W]

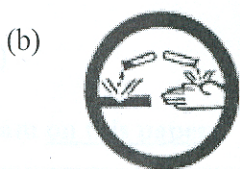
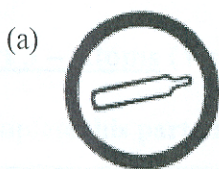


32. A rhinoceros has a mass of 1440.83 kg. This measurement has
- (a) 2 significant digits
 - (b) 4 significant digits
 - (c) 5 significant digits
 - (d) 6 significant digits

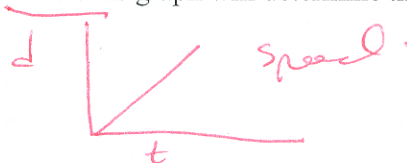
33. If 1 min = 60 s, then 42 s equals
- (a) 12 min
 - (b) 0.70 min
 - (c) 178 min
 - (d) 2520 min

$$42s \times \frac{1 \text{ min}}{60s} =$$

34. Which WHMIS symbol means "biohazardous infectious material"?



35. The slope of the best-fit straight line of a distance-time graph will determine the
- (a) distance of the object
 - (b) speed of the object
 - (c) acceleration of the object
 - (d) displacement of the object



36. Acceleration can best be defined as
- (a) the speed at which an object is travelling at a particular instant
 - (b) the displacement of an object divided by time
 - (c) the total distance covered over the total time measured
 - (d) the rate of change in velocity

$$\vec{a} = \frac{\Delta \vec{v}}{t}$$