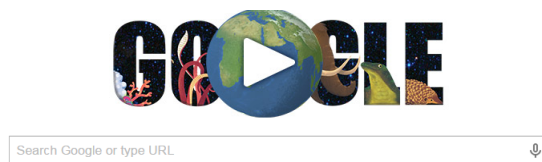
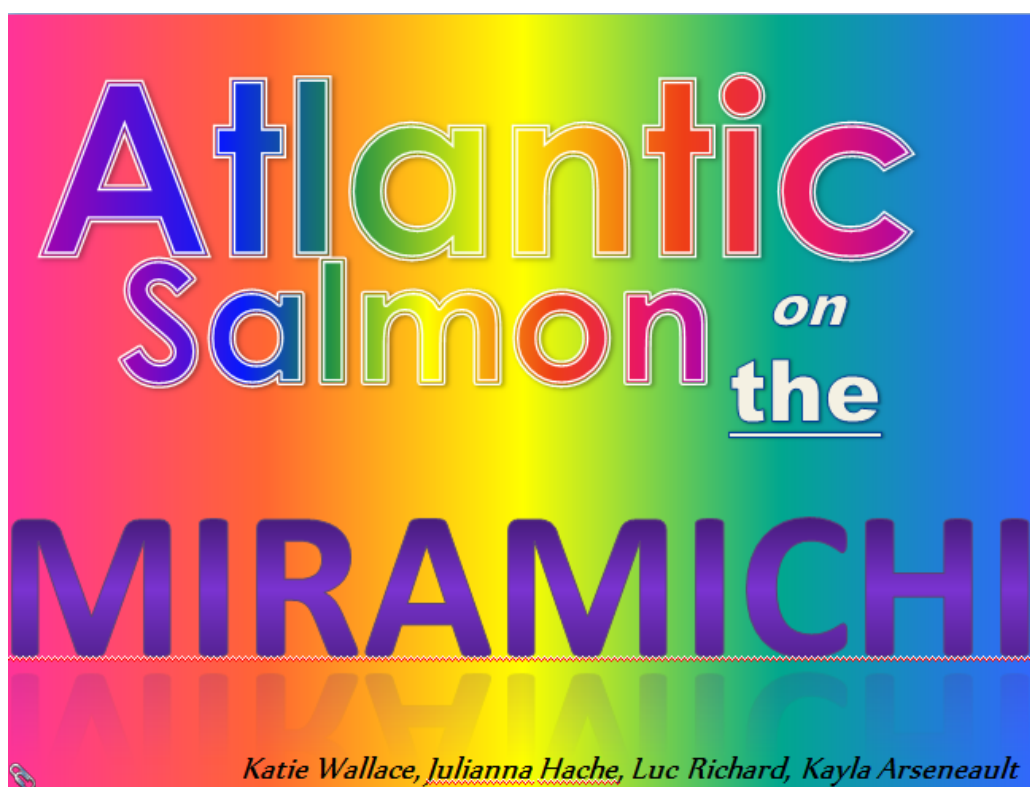


- 2015 Earth Day... <http://www.earthday.ca/>
- 'Make Earth Day Every Day' Campaign
 - Sign the Earth Day Flag



Taking Care of the Species...Live Release!





Notes from presentation...

Adaptations:

- Atlantic Salmon are anandromous, which means that they migrate from the rivers to the sea.
- One of the main adaptations is their gills. There are four sets and each gill contains “specialized cells” that allow them to travel between salt water and fresh water.
- “The Lateral Line” is very important. It allows salmon to “detect” movement in the water, whether it be other fish, or even water currents. Knowing the flow of the water is important because the salmon need to know the difference between upstream and downstream to migrate.
- **Salmon have the ability to filter the salt water in their gills without absorbing it into the blood stream.**

Attachments

Salmon Statistics Powerpoint.pptx