

Wednesday, February 11/15
Science 122

<http://mvhs-sherrard.weebly.com/>

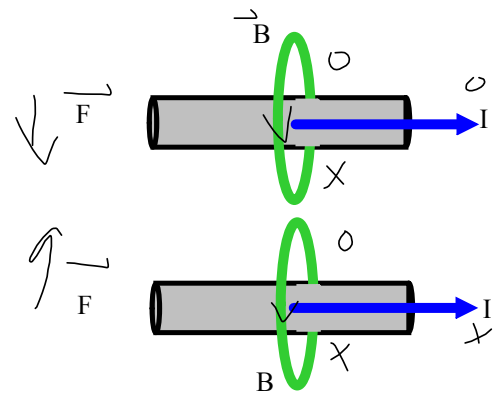


Grad meeting to Wednesday during IS - Main Theatre.

-
1. Formative Assessment
 2. Electric Motor - Model -> Continue
 3. Quiz -> Start to End of Electric Motors
-> ~~Thursday, Feb 2/13.~~
 4. Magnitude of Magnetic Fields
-
5. Worksheet - Magnetic Field Produced by a Wire
 6. The Force On A Wire Due To A Magnetic Field
 7. Worksheet - Force on a Wire In a Magnetic Field
 8. Force on a Single Charged Particle

Formative Assessment - Two Current-Carrying Wires

Use symbols (X, O, \rightarrow) to indicate the direction of the magnetic field created by each wire, the magnetic field experienced by each due to the other, and the direction of the force each experiences.



Wednesday, February 11/15
Physics 122/121

<http://mvhs-sherrard.weebly.com/>

Grad meeting to Wednesday during IS - Main Theatre

1. Formative Assessment - Type II (Complex)
2. Type III Force Problems - Incline Plane Problems - Continue
3. Text: Chapter 5 -> Page 191, #25
Page 194, #27, 28
4. Worksheet - Sample Problems: Inclined Planes
5. Worksheet - Force Problems I, II and III
6. Quiz - Force Problems: Types I, II and III
-> Tuesday Next Week

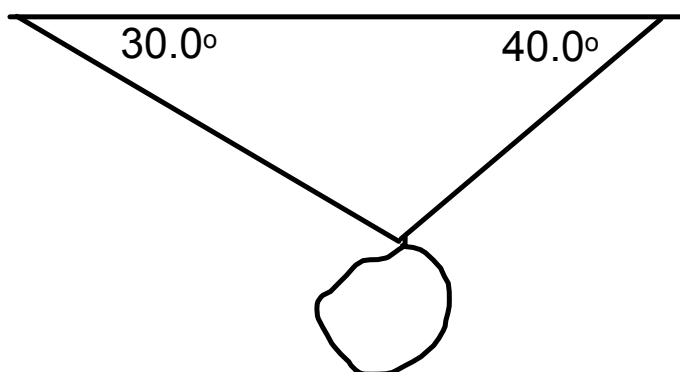
HW.

Part 1 - MC (5)
Part 2 - SA (5)
Part 3 - Prob (very)
1. Push/Pull

2. Simple Sign
3. Complex Sign
4. Incline plane

Formative Assessment - Type II Force Problem (Complex) Feb 11

Find the tensions in strings A and B supporting a 20.0 N rock hanging from the ceiling. Strings A and B make angles of 30.0° and 40.0° with the ceiling, respectively. 16.3N 18.4N



Wednesday, February 11/15
Science 10

© 2014-2015 Holt, Rinehart and Winston. All rights reserved. This material is intended solely for educational use. Printed in the USA.

1. Article Review - Indicators - 5 Days Late Today
2. Assignment - Indicator Species - 3 Days Late Today
3. Assignment - Oh, What a Tangled Web... - 1 Day Late Today
4. Quiz - Ecology to Food Webs -> Thursday
5. Check -> Textbook: Page 13 - UC #1, 2, 4 a-b
Page 23 - UC #1, 2, 3, 4, 5
6. Biodiversity -> Video
7. Assignment - Symbolic Meaning of Animals in Various Cultures
8. Bioaccumulation and Biomagnification

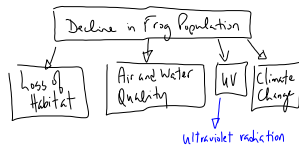
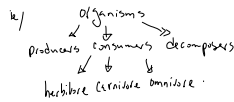
p. 13: 1, 2, 4-b

Page 11

1. a) insects -> increase.
Frog b) algae (photosynthetic)
 algae -> increase.
2. herbivore - grasshopper
 (carnivore) - heron, frog, yellow perch
 water boatman, tadpole.
 omnivore ~~~~~

4. a) skin: air/water
 ecosystem: tadpole -> water
 frog -> water/land.

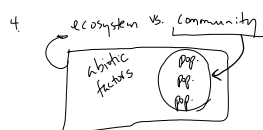
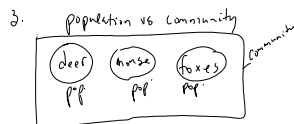
b) concept map



p. 23: #1. ecology "Study of" ecosystems

2. a) biotic: fish, tadpole, frog, insects } *feedback ecosystem*
 abiotic: water, rock, sand/soil, minerals

- b) terrestrial (land) biotic: birds, trees, squirrel, fungus.
 abiotic: sun, wind, temperature, rain, soil.



5. p. 23 ecotones
 ↓
 greater diversity