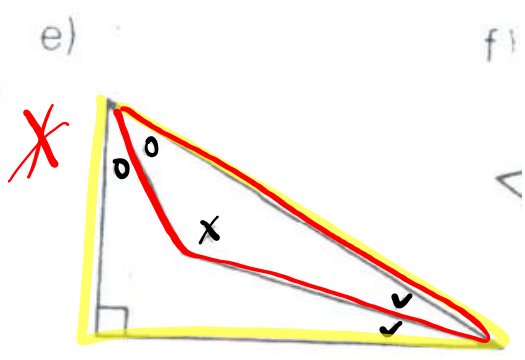


Solutions from the HOMEWORK...Questions???

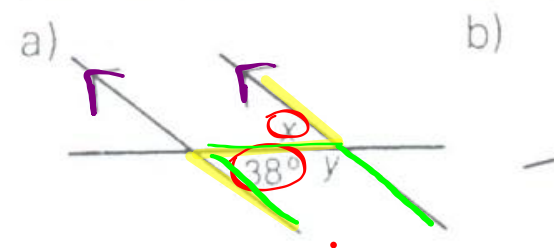
Worksheet Solutions - Angle Properties.pdf



$$90^\circ + 0 + 0 + \checkmark + \checkmark = 180$$

$$0 + x + y = 180$$

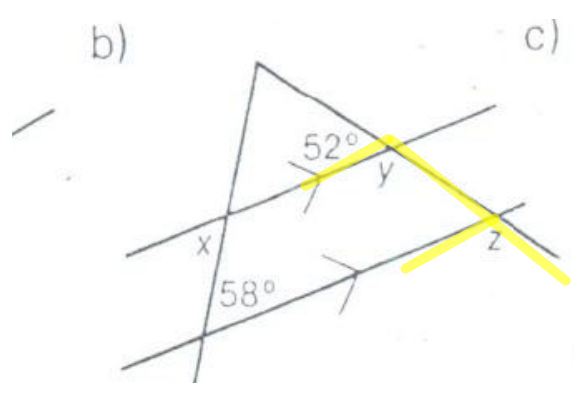
2. Find the values of x and y



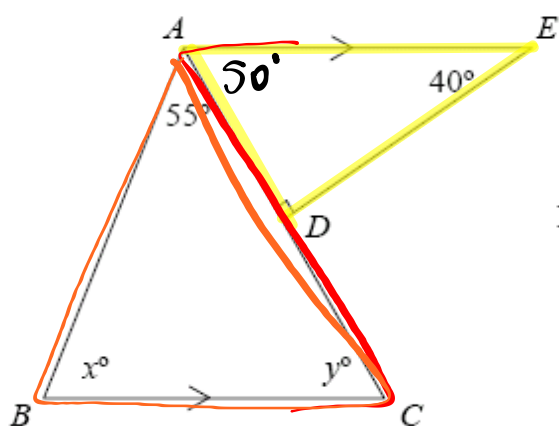
$$x = 38^\circ$$

$$y = 180 - 38$$

$$y = 142$$



WARM-UP...



Find x° and y° .

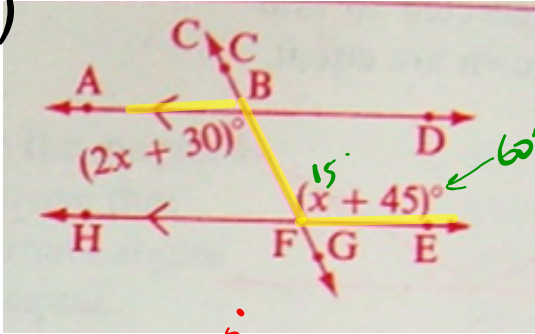
$$y = 50^\circ$$

$$x = 180^\circ - 55^\circ - 50^\circ$$

$$x = 75^\circ$$

MORE EXAMPLES...

1)



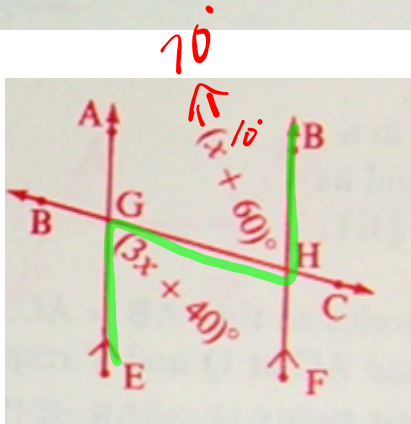
$$2x + 30 = x + 45$$

$$x + 30 = 45$$

$$x = 45 - 30$$

$$x = 15$$

2)



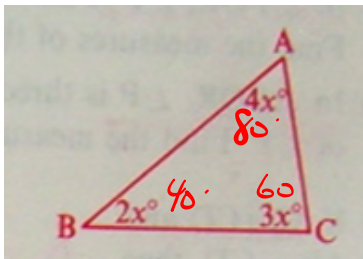
$$3x + 40 = x + 60$$

$$3x - x = 60 - 40$$

$$2x = 20$$

$$x = 10$$

3)

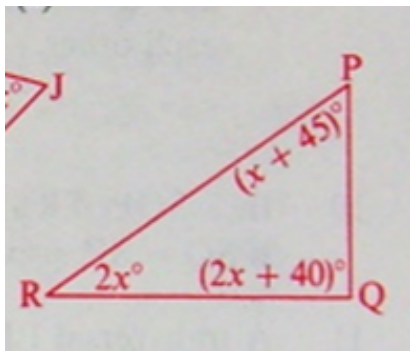


$$2x + 3x + 4x = 180$$

$$9x = 180$$

$$x = 20$$

4)



$$2x + x + 45 + 2x + 40 = 180$$

$$5x + 85 = 180$$

$$5x = 180 - 85$$

$$5x = 95$$

$$x = 19$$

PRACTICE TIME...

 Worksheet - Parallel Lines and Transversals.pdf

 **Worksheet Solutions - Parallel Lines and Transversals.pdf**

HOMEWORK...

- 1) Finish the worksheet
- 2) In-class Assignment Tomorrow

Attachments

Worksheet Solutions - Angle Properties.pdf

Worksheet - Parallel Lines and Transversals.pdf

Worksheet Solutions - Parallel Lines and Transversals.pdf