

APRIL 26, 2016

**UNIT 7: SIMILARITY AND
TRANSFORMATIONS**

**MID-UNIT QUIZ
PREPARATION**

**M. MALTBY INGERSOLL
AND T. SULLIVAN**
MATH 9



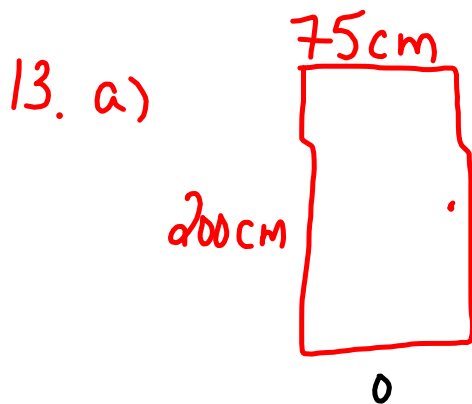
WHAT'S THE POINT OF TODAY'S LESSON?

We will continue working on the Math 9 Specific Curriculum Outcome (SCO) "Shape and Space 3" OR "SS3" which states:

"Demonstrate an understanding of similarity of polygons."

HOMWORK QUESTIONS?

(pages 341 / 342, #4, #5, #9 and #13)



$$\begin{aligned} \text{b) } SF &= \frac{s}{o} \\ &= \frac{25}{200} \\ &= \frac{1}{8} \\ &= 0.125 \end{aligned}$$

$$\begin{aligned} w &= \frac{75}{1} \left(\frac{1}{8} \right) \\ \text{OR} \\ &= 75(0.125) \\ &= 9.375 \\ &\dot{=} 9.4\text{cm} \end{aligned}$$

$$\begin{aligned} \text{OR } \frac{w}{75} &\dot{=} \frac{25}{200} \\ 200w &= 1875 \\ w &= 9.375 \\ w &\dot{=} 9.4\text{cm} \end{aligned}$$

QUIZ PREPARATION:

MMS9:

PAGE 352: #5(a)

PAGE 377: #6

PAGE 378: #8

PAGE 380: #2

PAGE 465: #14 and #15

WORKSHEET ("Using Similar Polygons / "Lesson
7.3 Similar Polygons")