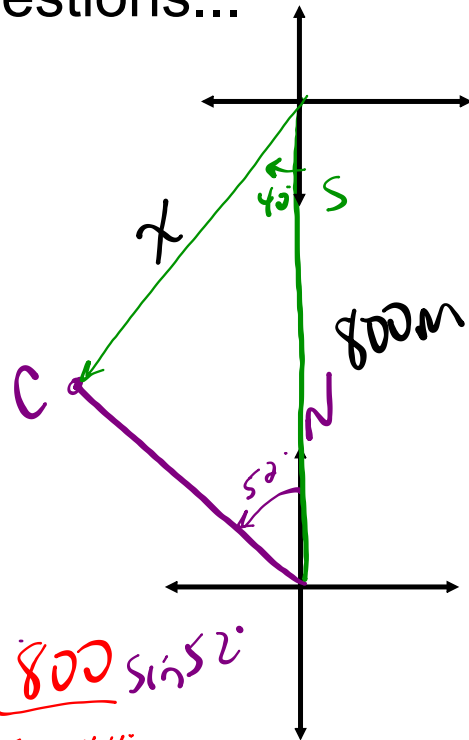
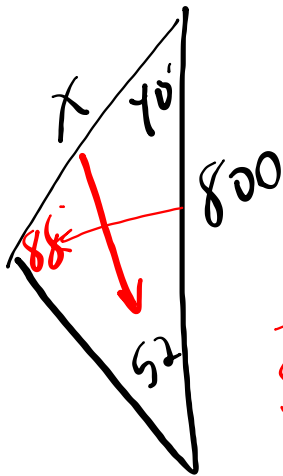


Q. 129

Review questions...

8. As Chloe and Ivan are paddling north on Lac La Ronge in Saskatchewan, they notice a campsite ahead, at $N52^\circ W$. They continue paddling north for 800 m, which takes them past the campsite. The campsite is then at $S40^\circ W$. How far away, to the nearest metre, is the campsite from their position at the second sighting?

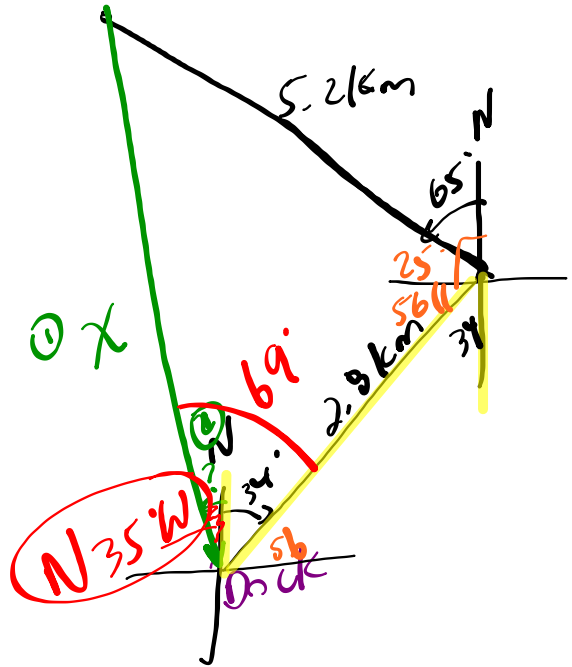
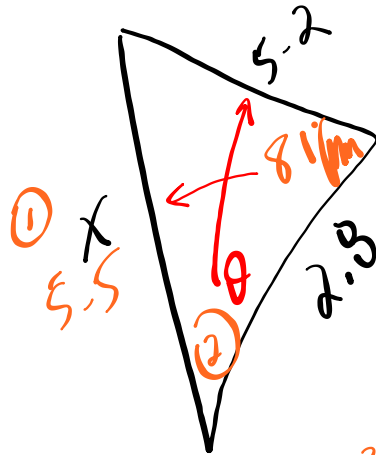


$$\frac{x \sin 52^\circ}{\sin 52^\circ} = \frac{800 \sin 52^\circ}{\sin 88^\circ}$$

$$x = 630.3 \text{ m}$$

Q.154 #12

12. A canoeist starts from a dock and paddles 2.8 km N34°E. Then she paddles 5.2 km N65°W. What distance, and in which direction, should a second canoeist paddle to reach the same location directly, starting from the same dock? Round all answers to the nearest tenth of a unit.



① $x^2 = 2.8^2 + 5.2^2 - 2(2.8)(5.2)\cos 81^\circ$

$2.8^2 + 5.2^2 - 2 * 2.8 * 5.2 * \cos(81)$ 30.32462838 $\sqrt{\text{Ans}}$ 5.506788219

$x = \boxed{x = 5.5 \text{ km}}$

② $\frac{2.8 \sin \theta}{5.2} = \frac{5.2 \sin 81^\circ}{5.5}$

$\sin^{-1} \sin \theta = \sin^{-1} (6.9338)$

$\theta = 69^\circ$

Review for Test - Lots of Practice from the Textbook!!!

**Chapter Review...
(Frequently Asked Questions)**

Page 128
Page 153
Page 174
Page 199

Thurs Test??

Practice Questions...

** Ambiguous case → 4.3*

Bearing #11, 12 →
Bearing #8 →

Page 129 #1 - 9
Page 154 #1 - 12
Page 175 #1 - 9
Page 200 #1 - 8

Practice Tests...

Page 152 #1 - 8
Page 198 #1 - 7