

April 13 - Report Cards Go Home (Wednesday)

April 14 - Parent-Teacher (Thursday - after school)

April 29 - Professional Learning Day (Friday)

May 5 - NBTA Meetings (Thursday)

May 6 - NBTA Council Day (Friday)

May 23 - Victoria Day (Monday)

May 27 - Professional Learning Day (Friday)

## Physics 112

Thursday, April 7/16

<http://mvhs.nbed.nb.ca/>

<http://mvhs-sherrard.weebly.com/>

---

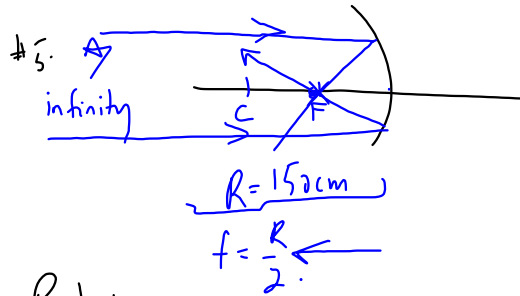
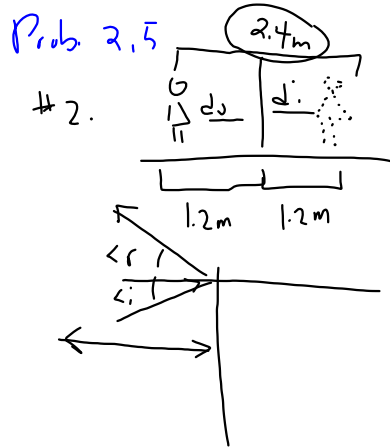
Explain That Stuff - April 8/16

Midterm - April 21/16 (Thursday)

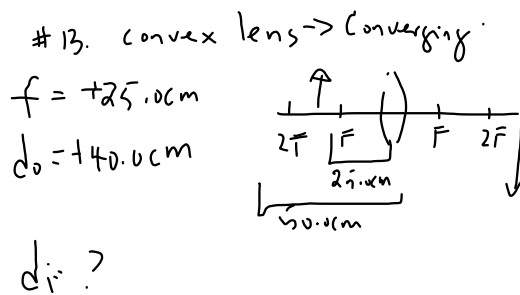
1. Return Marks -> Test - Unit 1
  2. Check -> Worksheet - Practice Problems (PP) - C4 - Page 137: 1-4
  3. Four More Forces
  4. Types of Forces
  5. Free Body Diagrams (FBDs) - To Be Continued
  6. Assignment: U2-S1 -> To Be Announced (TBA)
- 
7. Unit 2 - Section 2 - Newton's Laws
  8. Galileo and His Inclined Plane Experiment
  9. Inertia
  10. Newton's First Law of Motion - The Law of Inertia
  11. Worksheet: C4 - Extra Practice - Weight and Friction  
Practice Problems (PP) - C4, Page 144: 5-7  
PFU: Page 151, #26-28, 30-32, 34

Midterm - April 28/16 (Thursday)

1. Check -> Red Text  
-> C18 - Page 381 - PP #14-16  
Page 383 - PP #17-19  
Page 387 - Review #1, 6, 9, 10, 12, 13  
Applying Concepts #3-8  
Problems #2, 4, 5, 7, 8, 9, 10, 13, 14
2. Experiment 37 - Image Formation by a Converging Lens  
- To Be Continued



Prob 13



b).

$$m = \frac{h_i}{h_o} = -\frac{d_i}{d_o}$$

$\uparrow$   $h_o$   $10\text{cm}$        $\uparrow$   $h_i$   $20\text{cm}$

$$m = \frac{h_i}{h_o} = -\frac{d_i}{d_o}$$

## Science 10

<http://mvhs.nbed.nb.ca/>

Thursday, April 7/16

---

1. Lab - Types of Reactions, Gas Collection and More  
- 5 Days Late
  2. Experiment: Measurement and Significant Digits  
- Each person submits a lab sheet for marking.  
- 2 Days Late
  3. Quiz - Start of Physics to the End of Metric Conversions
  4. Check -> Worksheet - Finding Slope From a Graph
- 
5. Distance vs Time Graph
  6. Slope and Speed
  7. Activity - Tumble Buggies

## Physics 122

Thursday, April 7/16

<http://mvhs.nbed.nb.ca/>

<http://mvhs-sherrard.weebly.com/>

---

### Explain That Stuff - April 8/16

1. Test - Unit 1 -> Friday, April 8/16
2. Experiment 10.2 - Torques (Page 67)  
Experiment 9.1 - Conservation of Momentum (Page 55)

- 
3. Unit 2 - Projectiles, Circular Motion, Law of Gravitation, SHM

Test Prob. → Force  
 → push/pull ①  
 → ~~sign~~  
 → inclined plane ①

Torque

→ static equilibrium  
 no angles / angles ①

6 problems

10 min / prob.

Relative Vel.

→ boat / plane ①

→ ~~intersection~~

Collisions / Expl ①

→ 1D (elastic / inelastic) ①  
 → 2D