

# LAB: Dissection of a SMOLT...

UNB Lab.pdf

Env. Sci. Lab - Dissection of a smolt.pdf

---

## Biology 1017 - LABORATORY 8

### LEARNING ABOUT VERTEBRATES

#### Preparation

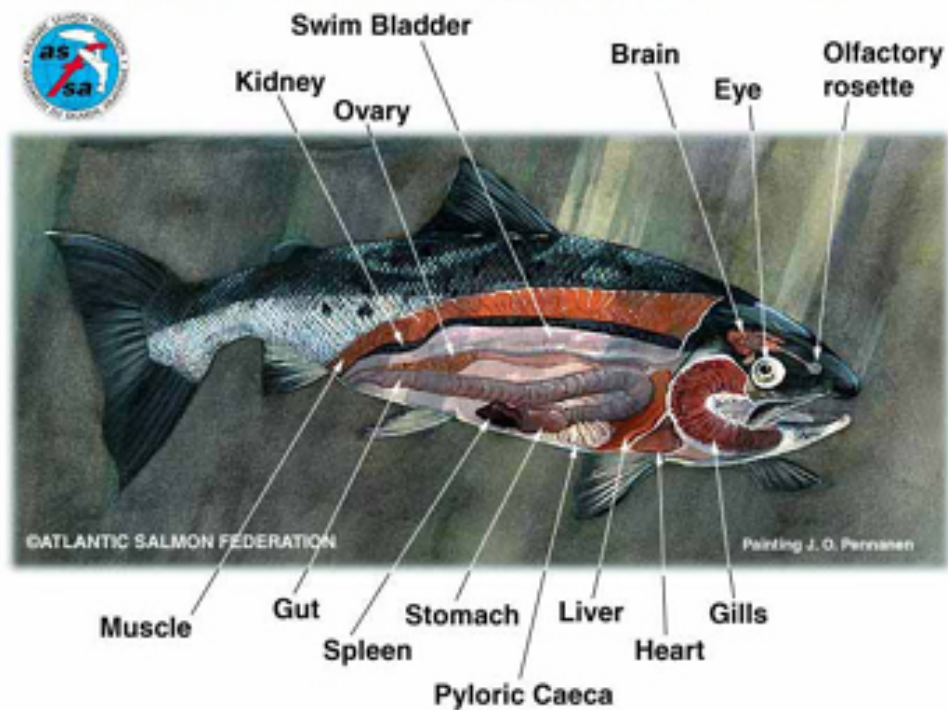
Read this exercise before you come to the laboratory. Understand the following terms: chordate, vertebrate, evolution, respiratory system, circulatory system, urogenital system, photoreceptor.

#### Objectives

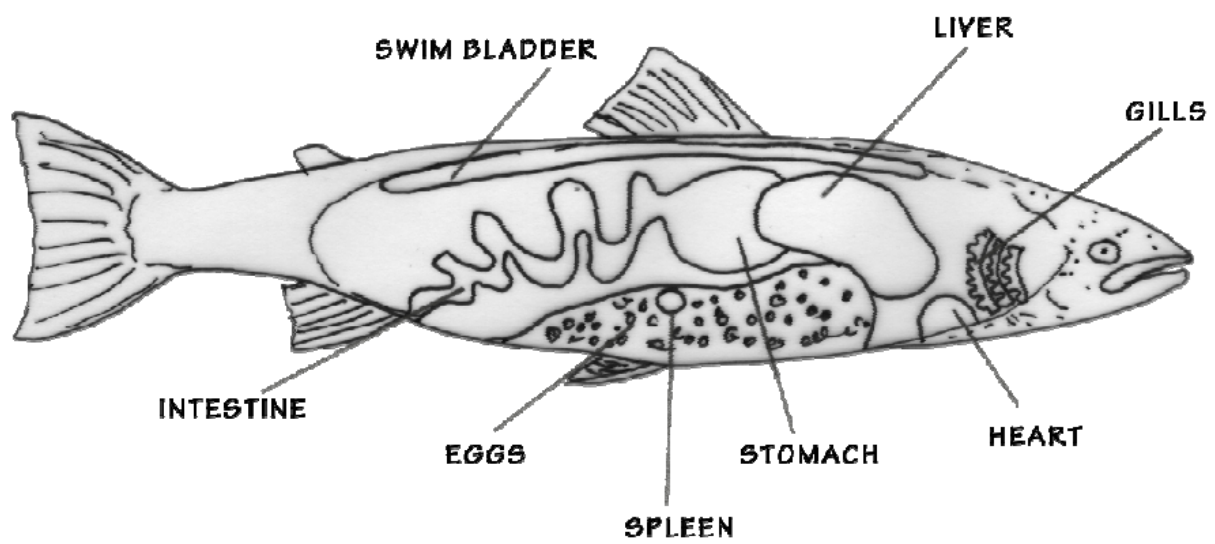
1. To study the external and internal anatomy of a representative vertebrate (specifically, a fish)
2. To study the structure of a vertebrate eye
3. To understand evolutionary trends in animals

# Internal Anatomy of an Atlantic Salmon

**Wild Atlantic salmon - designed for survival**



### Internal Anatomy



## Notes from presentation...

### Adaptations:

- Atlantic Salmon are anandromous, which means that they migrate from the rivers to the sea.
- One of the main adaptations is their gills. There are four sets and each gill contains “specialized cells” that allow them to travel between salt water and fresh water.
- “The Lateral Line” is very important. It allows salmon to “detect” movement in the water, whether it be other fish, or even water currents. Knowing the flow of the water is important because the salmon need to know the difference between upstream and downstream to migrate.
- **Salmon have the ability to filter the salt water in their gills without absorbing it into the blood stream.**

# APRIL VOKEY'S JOURNEY



A glimpse of what happens when you get April Vokey and Vantage Point Media House working together towards a common goal.

## Attachments

---

Lab - Dissection of a smolt.pdf

UNB Lab.pdf