

JANUARY 14, 2016

UNIT 4: POLYNOMIALS

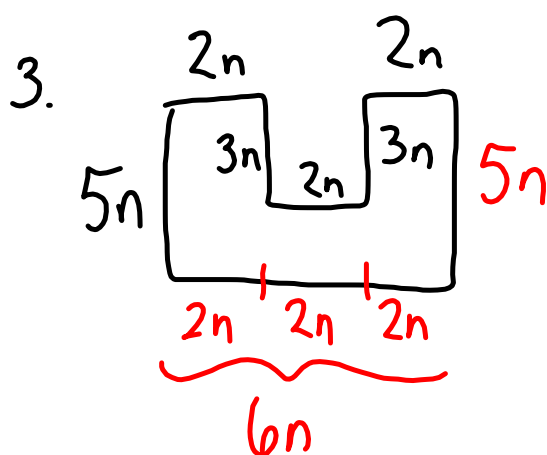
TEST PREPARATION
(Test Date: Fri., Jan. 15)

M. MALTBY INGERSOLL
MATH 9



HOMEWORK QUESTIONS???

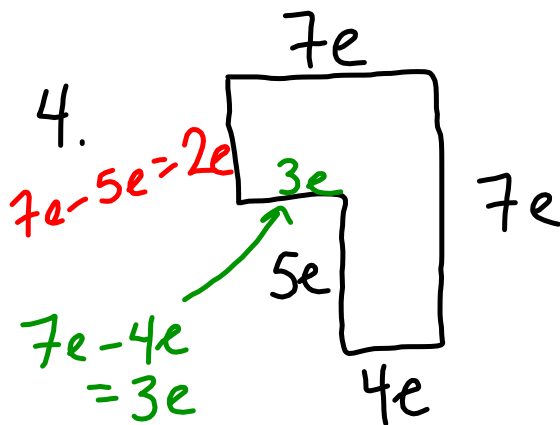
("Perimeter / Area Assignment" - worksheet)



$$\begin{aligned} P &= 2n + 3n + 2n + 3n + 2n + 5n + 6n + 5n \\ &= 28n \end{aligned}$$

$$\begin{aligned} P &= 28n \\ &= 28(5) \\ &= 140 \end{aligned}$$

HOMWORK QUESTIONS???
("Perimeter / Area Assignment" - worksheet)



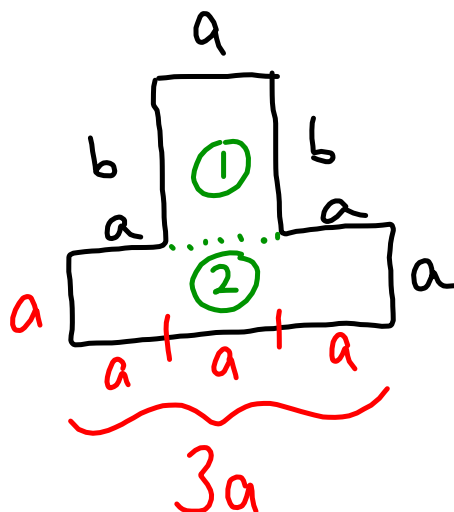
$$P = 7e + 7e + 4e + 5e + 3e + 2e$$
$$= 28e$$

$$P = 28e$$
$$= 28(8)$$
$$= 224$$

HOMEWORK QUESTIONS???

("Perimeter / Area Assignment" - worksheet)

5.



$$\begin{aligned}
 A &= \textcircled{1} + \textcircled{2} \\
 &= bh + bh \\
 &= a(b) + 3a(a) \\
 &= ab + 3a^2 \\
 &= 3a^2 + ab \text{ (descending order)}
 \end{aligned}$$

$$\begin{aligned}
 A &= 3a^2 + ab \\
 &= 3(2.5^2) + 2.5(4) \\
 &= 3(6.25) + 10 \\
 &= 18.75 + 10 \\
 &= 28.75
 \end{aligned}$$

UNIT 4 TEST PREPARATION - POLYNOMIALS (suggested practice questions):

MMS9

Page 214: #4 TO #7 (vocab.)

Page 235: #13ab

Page 247: #14

Page 258: Study Guide

Page 259: #1, #5, #6, #9 and #10

Page 260: #12, #14, #15 and #19

Page 261: #22, #23 and #26 TO #29

Page 262: Practice Test