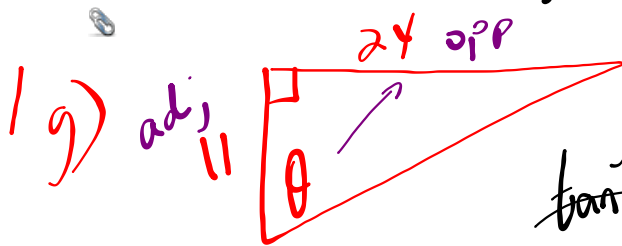


HOMWORK... Questions

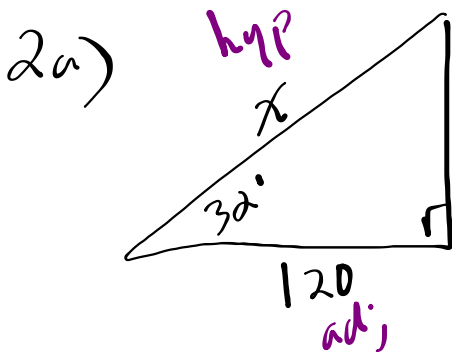
Worksheet - Primary Trig Ratios.doc



SOHCAHTOA

$$\tan^{-1} \tan \theta = \tan^{-1} \left(\frac{24}{11} \right)$$

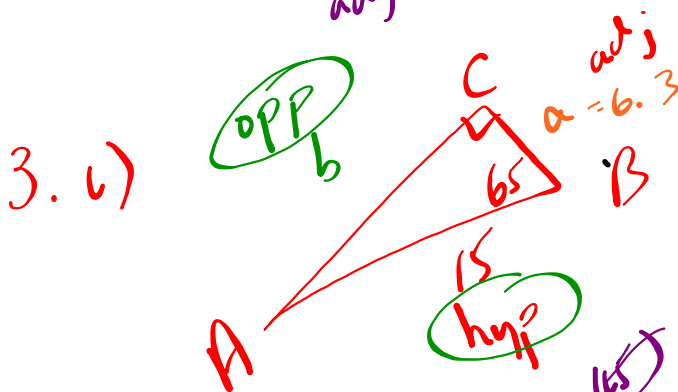
$$\theta = 65^\circ$$



$$\cos 32^\circ = \frac{120}{x}$$

$$x = \frac{120}{\cos 32^\circ}$$

$$x = 141.5$$



$$\angle A = 90 - 65$$

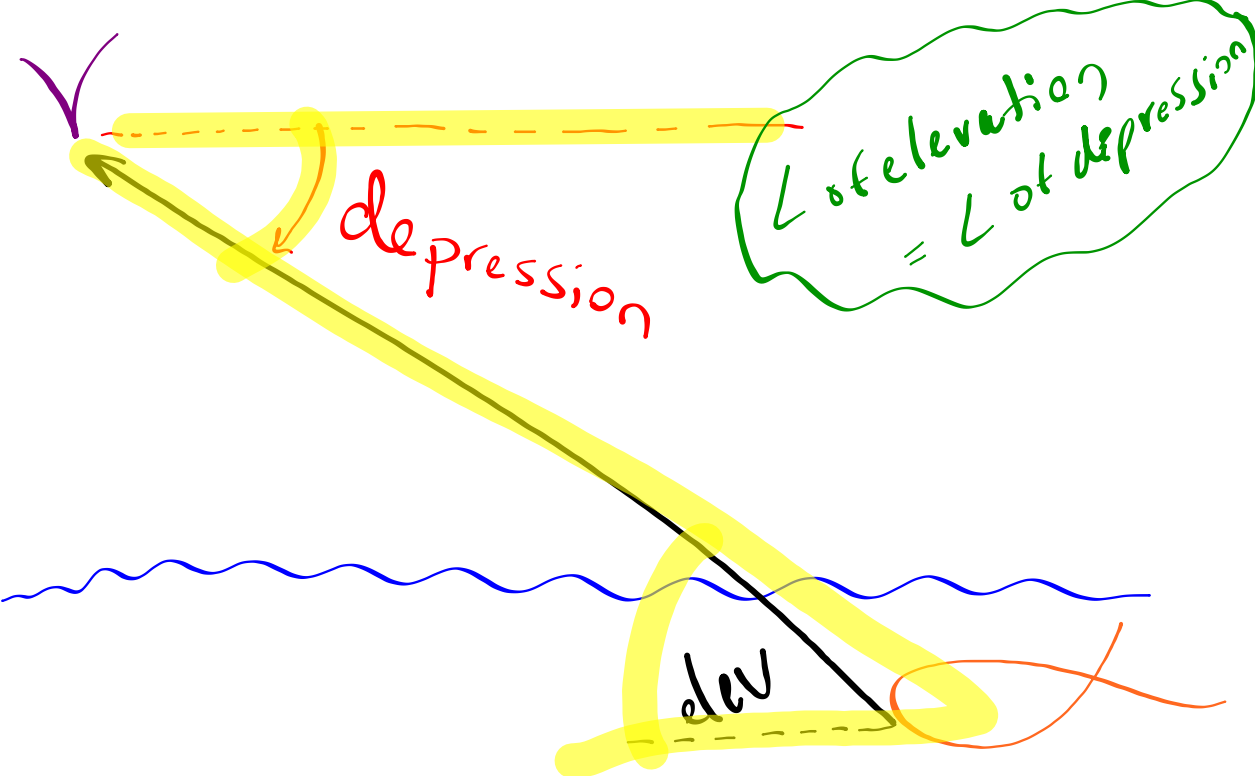
$$\angle A = 25^\circ$$

$$15 \cos 65^\circ = \frac{a}{15}$$

$$15 \sin 65^\circ = \frac{b}{15}$$

$$13.6 = b$$

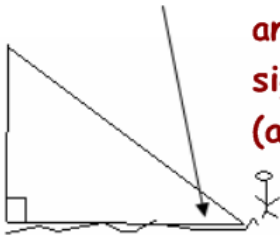
$$6.3 = a$$



Applications of Right Angle Trigonometry

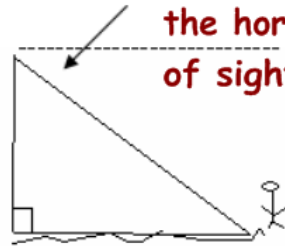
ANGLE OF ELEVATION/DEPRESSION

Angle of elevation - is the angle between the ground and the line of sight. (angle of inclination)



Always from the GROUND up

Angle of Depression - is the angle between the horizon and the line of sight.



Always outside the triangle

Example 1:

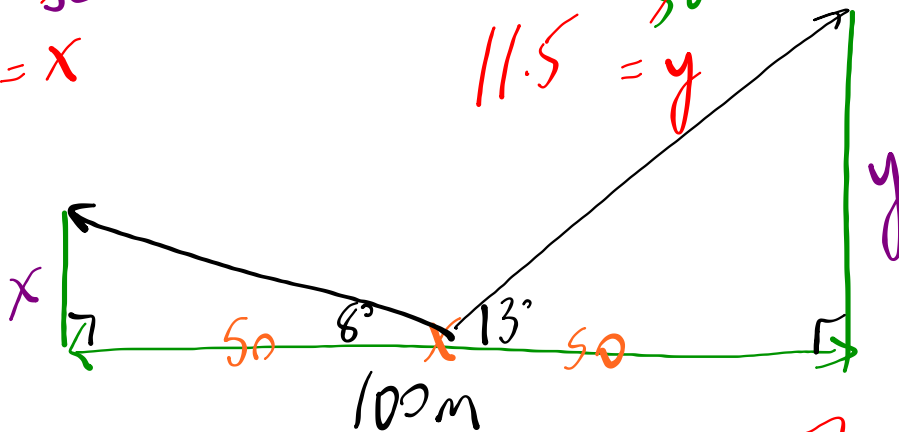
Two trees are 100m apart. From a point midway between them, the angles of elevation to their tops are 8° and 13° . How much taller is one tree than the other?

$$\text{so } \tan 8^\circ = \frac{x}{50}$$

$$7.0 = x$$

$$\text{so } \tan 13^\circ = \frac{y}{50}$$

$$11.5 = y$$

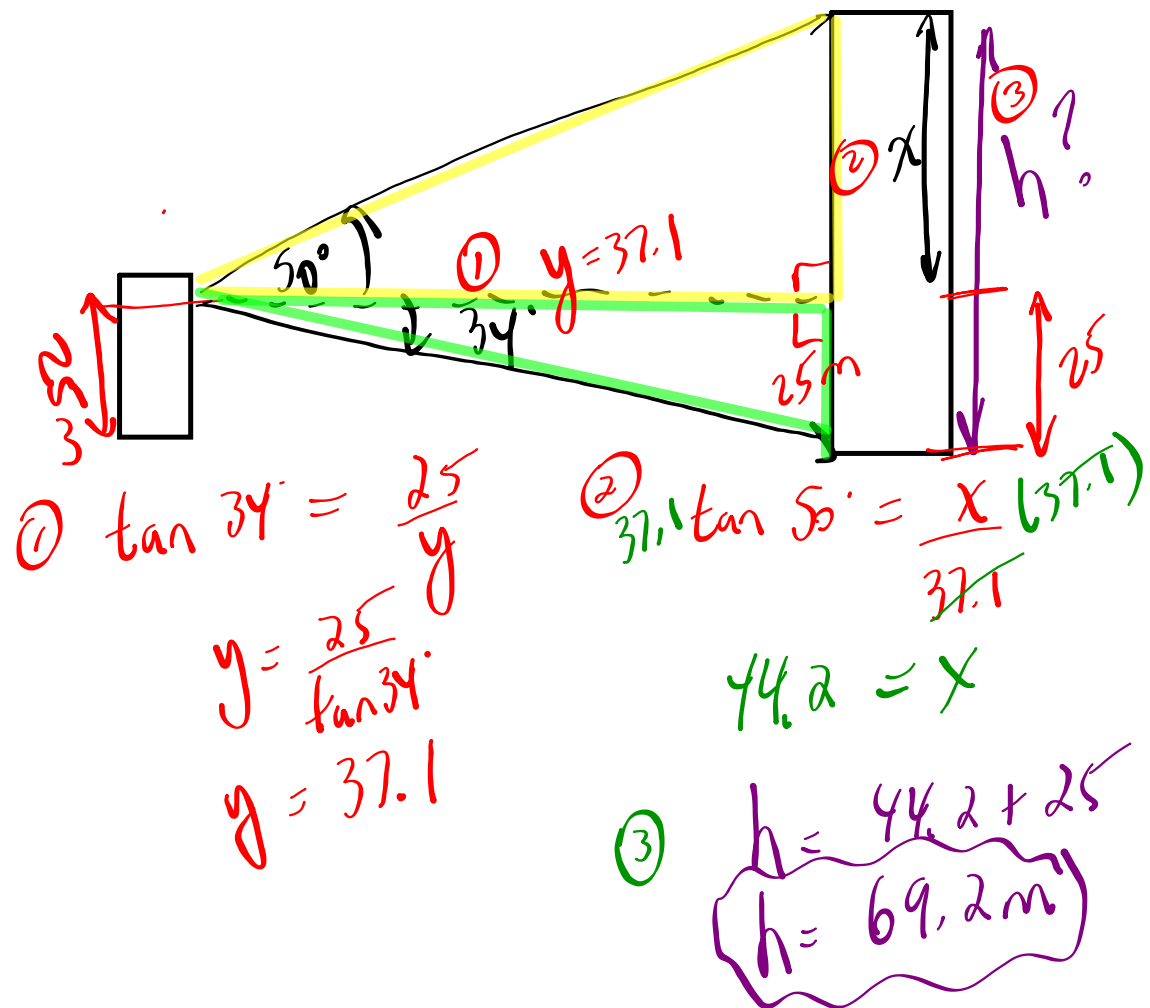


$$\text{Difference} = 11.5 - 7$$

$$= 4.5 \text{ m}$$

Example 2:

The 8th floor of an apartment building is 25m above the ground. From the 8th floor, the angle of elevation to the top of the other building is 50°. The angle of depression to the base of the taller building is 34°. Determine the height of the taller building.



HW. (Solving) 10.7 # 4a, #5a, #6a, 7
(Applications) 10.8 # 1-6

Attachments

Worksheet - Primary Trig Ratios.doc