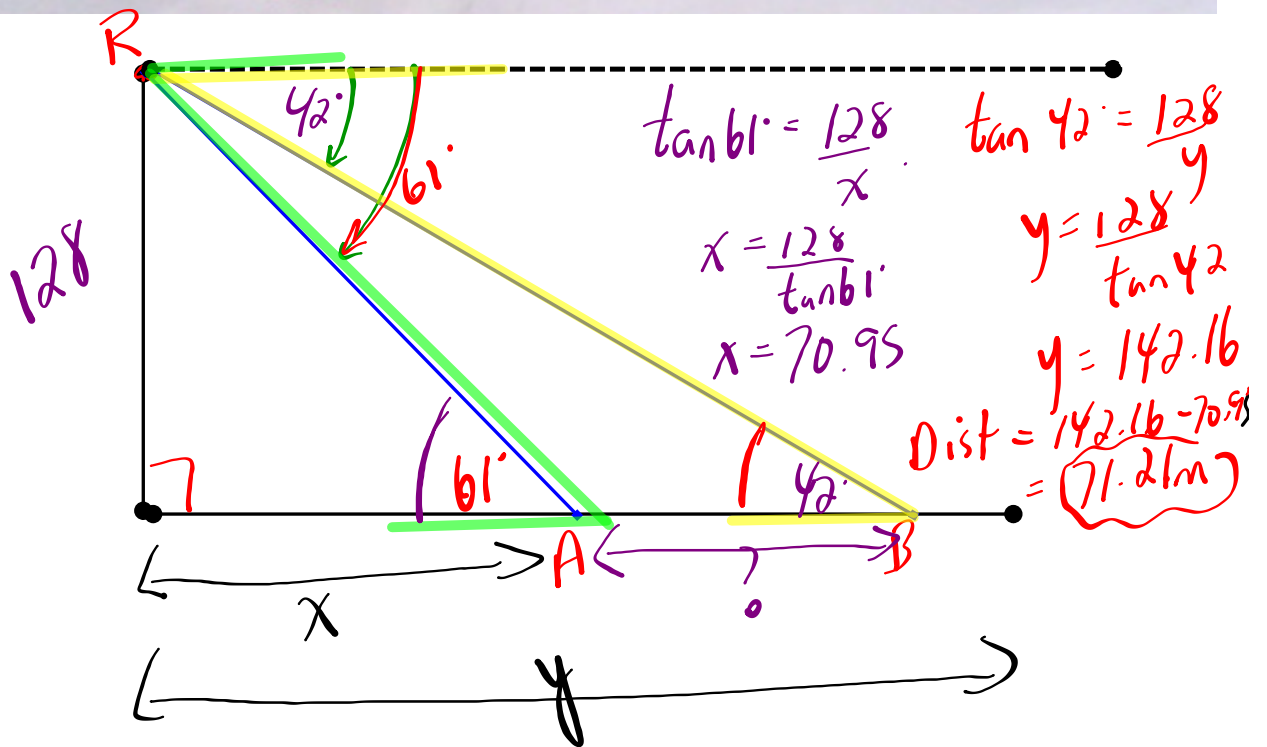


7. A forest ranger in a tower 128.0 m high sights two fires in the same line of sight with angles of depression 42° and 61° . How far apart are the fires?
 ↳ 39.7 km
 ↳ 71.21 m



Review for Test - FRIDAY!

**Chapter Review...
(Frequently Asked Questions)**

**Page 128
Page 153
Page 174
Page 199**

*Chp. 3
Chp. 4*

Practice Questions...

** Ambiguous case → 4.3*

*Bearing #11, 12 →
Bearing #8 →*

**Page 129 #1 - 9
Page 154 #1 - 12
Page 175 #1 - 9
Page 200 #1 - 8**

*Chp. 3
Chp. 4*

Practice Tests...

**Page 152 #1 - 8
Page 198 #1 - 7**

*Chp. 3
Chp. 4*

*****Cumulative Review (Chp. 3/4)**

Page 206 #1 - 10