

# Unit 1: Reproduction

Parts and Function of the Cell

A decorative graphic consisting of several horizontal lines of varying lengths and colors (yellow and white) extending from the right side of the slide.

**Bill Nye**



**The Cell**

# What is the Cell?

- Cells are the building blocks of life. All living things are made from cells
- Every part of a human body is made of cells – over 100 trillion
- Microscopic – can't be seen without a microscope

# What is the Cell

- Scientists have determined that even though there is no one, common cell, all plant and animal cells have many common factors.
- There are **unicellular organisms** (one celled organisms) and others that are **multicellular** (many celled organism).

# Cell Theory

The cell theory states:

1. All living things are composed of cells
2. Cells are the basic units of structure and function in living things
3. New cells are produced from existing cells

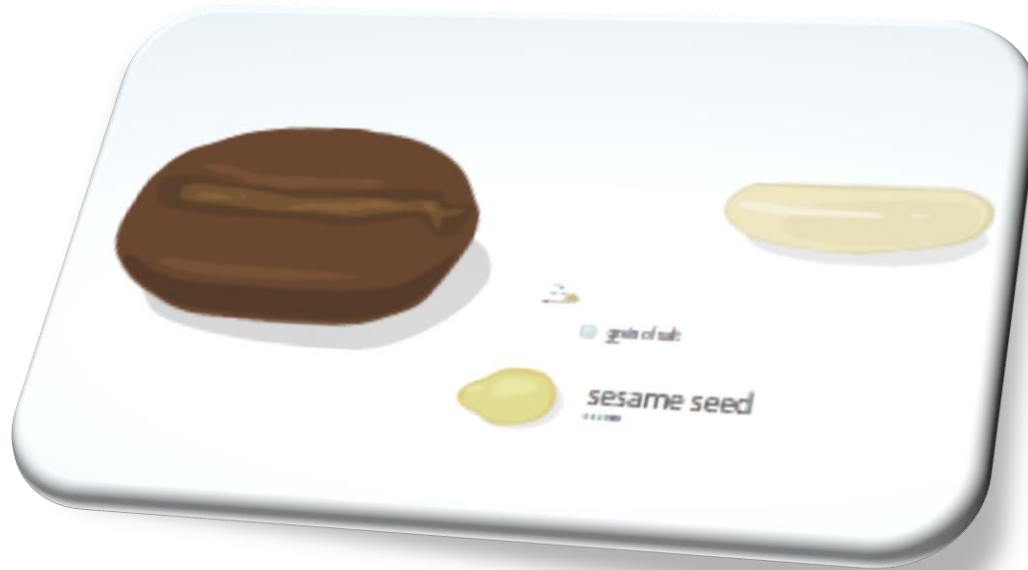
# History of the Cell



# Warm Up!

- List at least 2 of the 3 parts of the cell theory.
- Bonus: List all three

# How Big?





# Inside the Cell

Cells are the basic unit of structure and function in all living things.

If you look inside cells, there are even smaller structures called **organelles**.

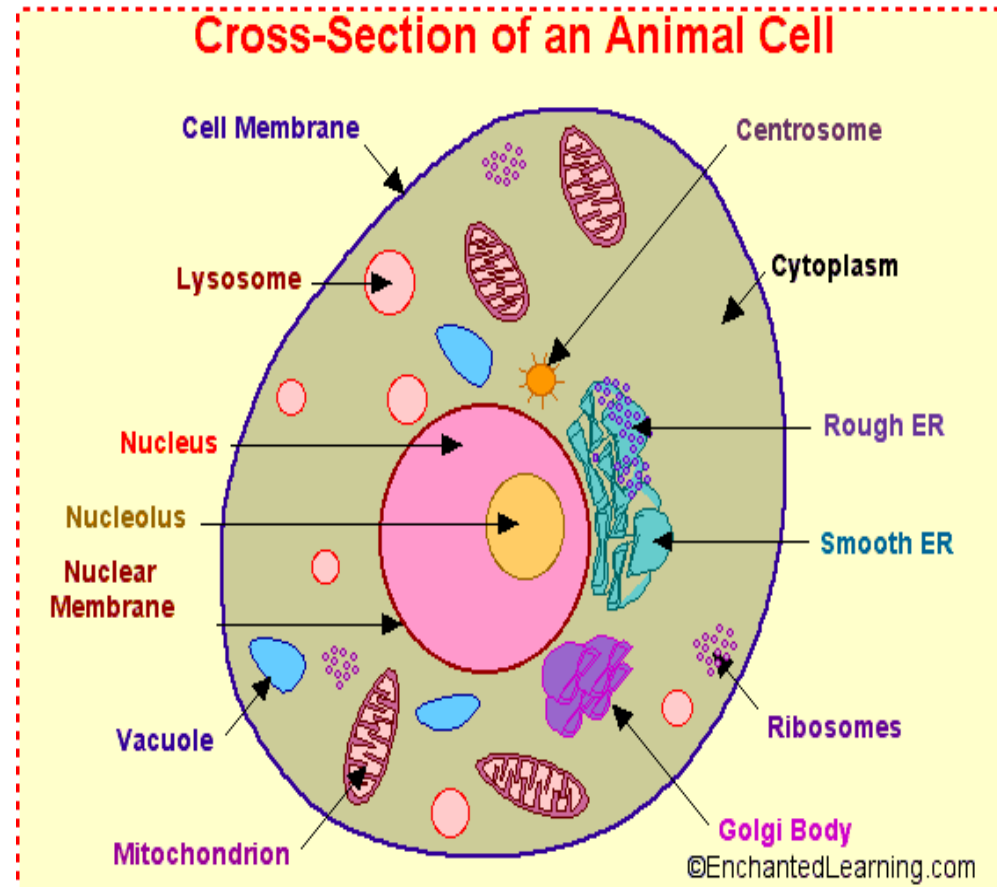
**Organelles** are specialized structures within the cell with a specific function.

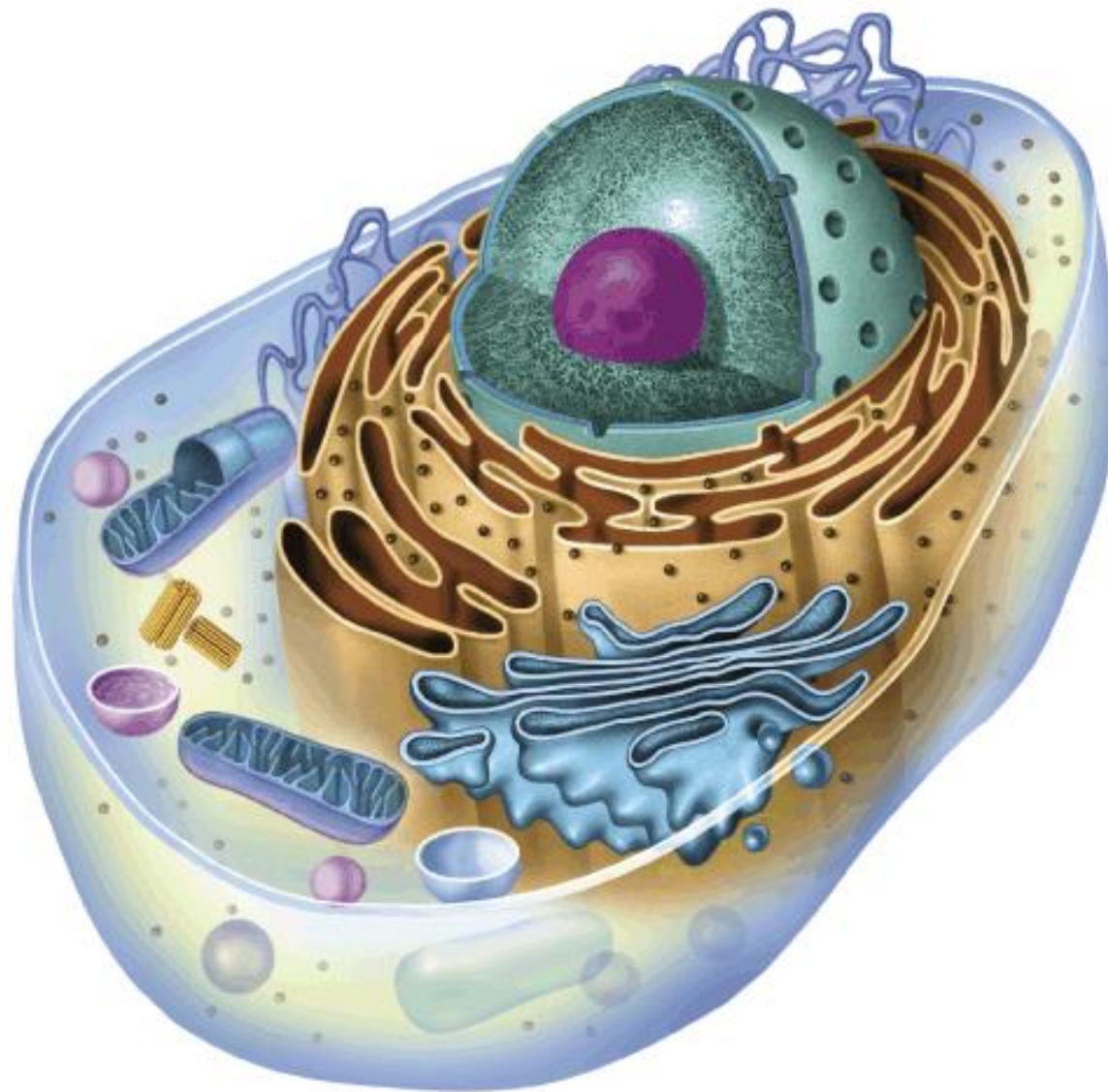
# Animal Cell

Pg 142

1. Label and colour diagram

2. Write definitions for organelles on back



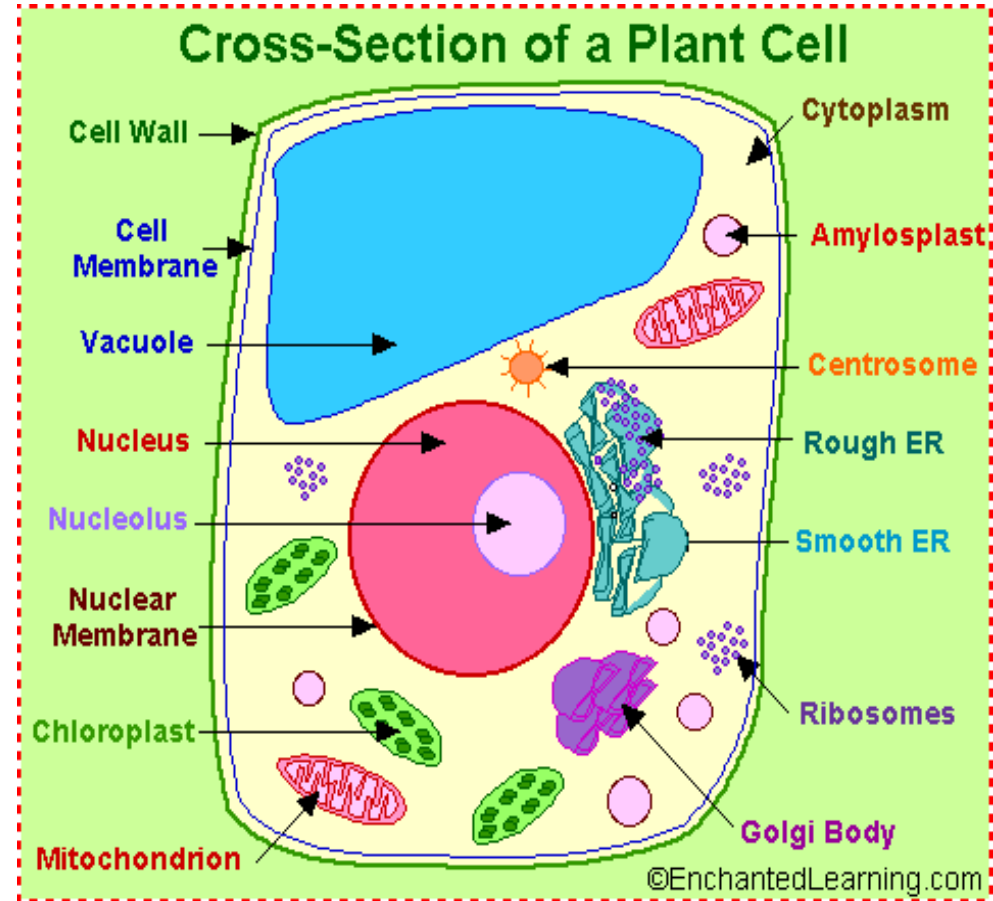


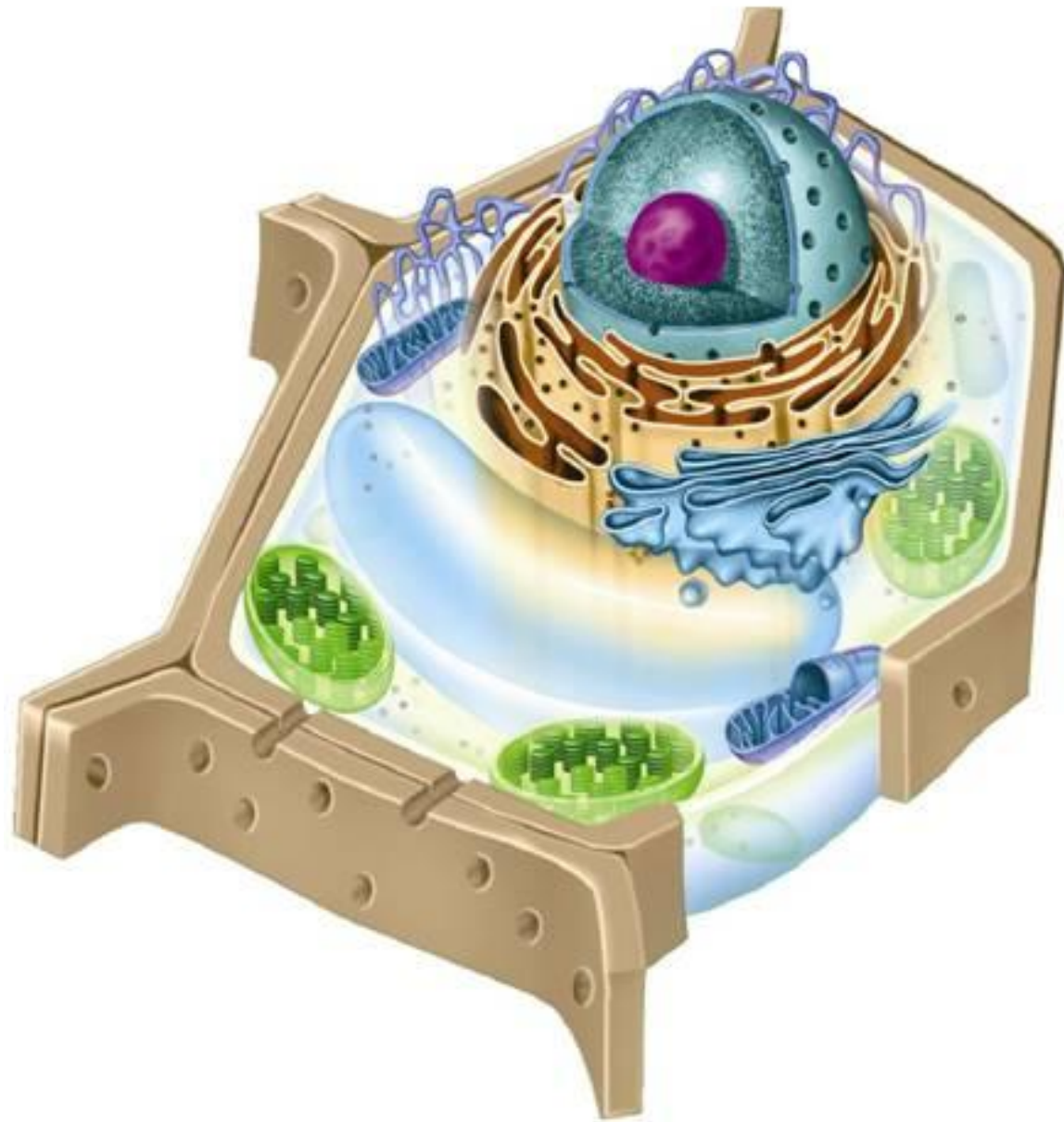
# Plant Cell

Pg 142

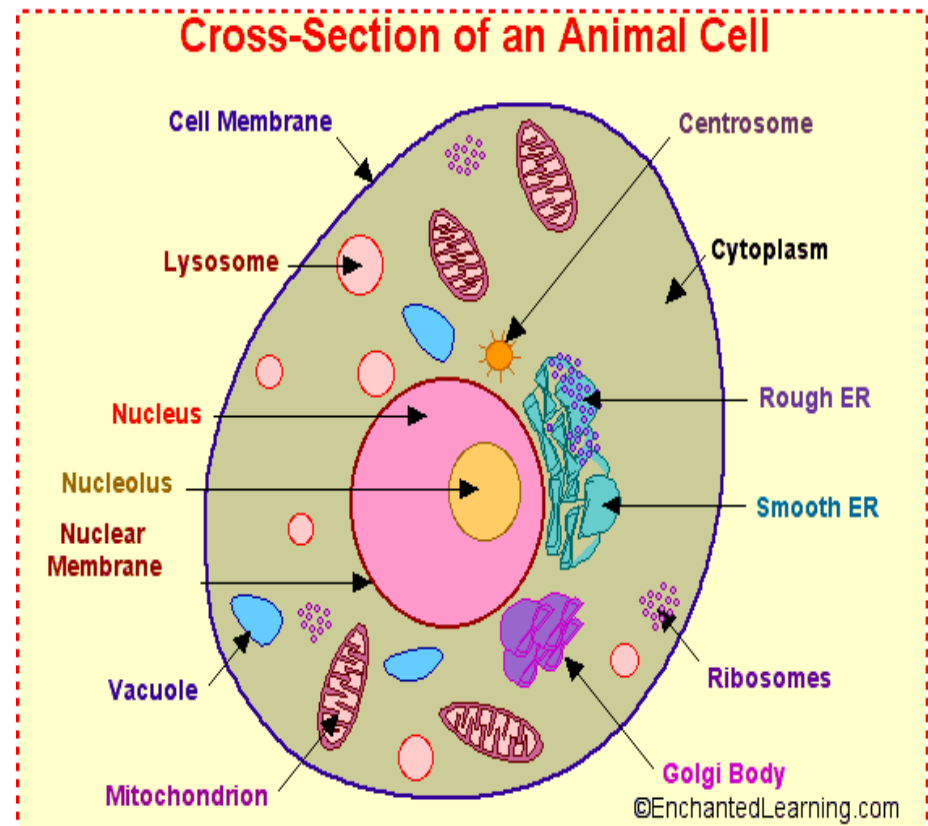
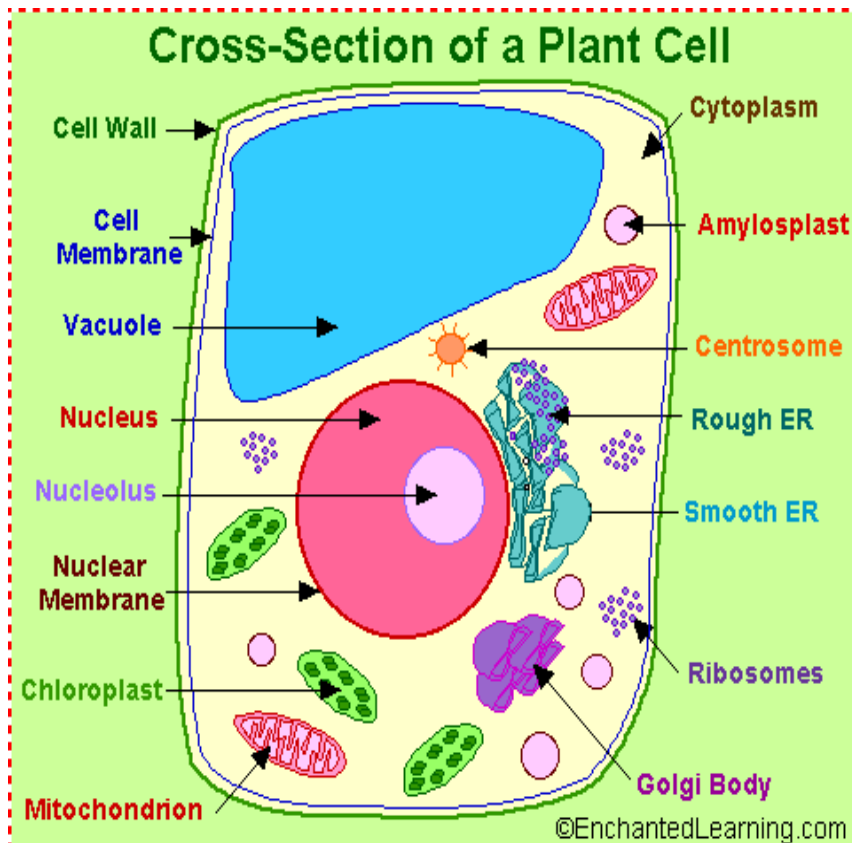
1. Label and colour diagram

2. Write definitions for organelles on back





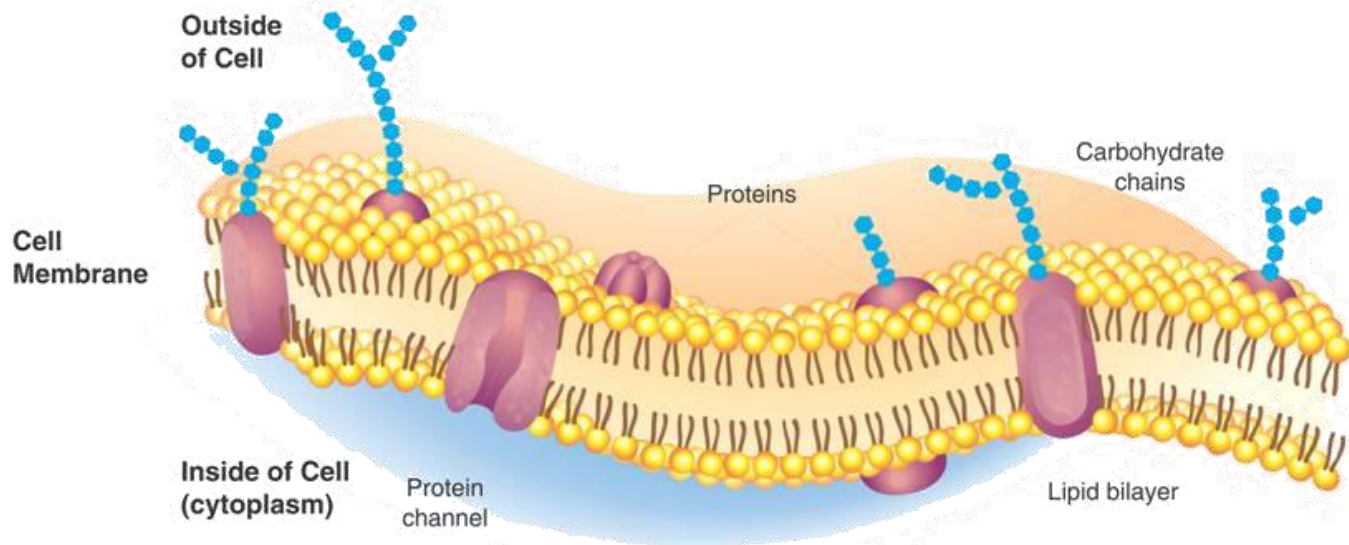
# Similar?



Make a list of the common features.

# Common Features

- **Cell Membrane:**
  - Thin flexible membrane that covers the entire cell.
  - Made up of proteins and lipids





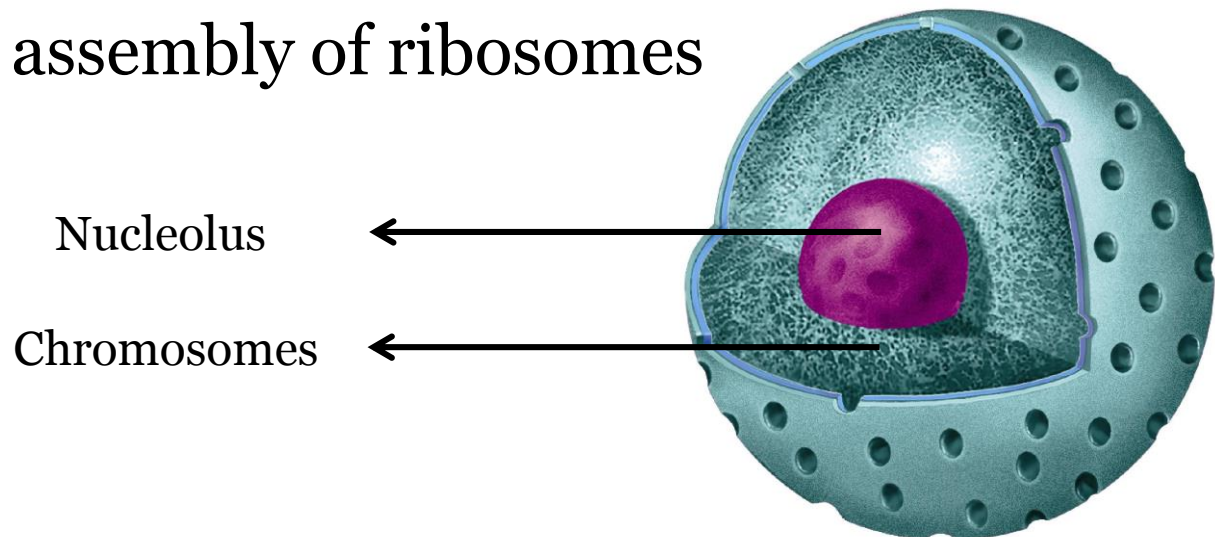
# Cell Membrane

- 3 Important Functions
  - Protects the inside of the cell
  - Provides cell's shape and support
  - Controls movement into/out of the cell



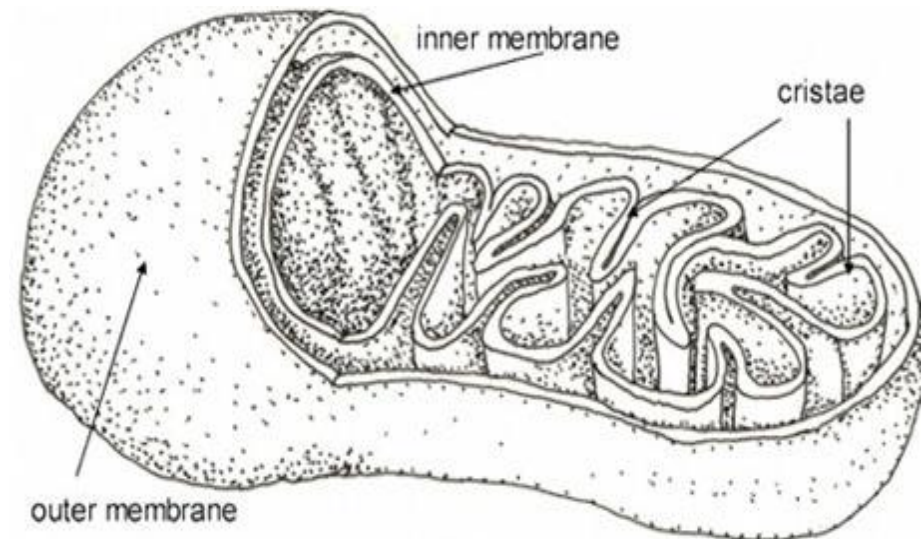
# Common Features

- **Nucleus:**
  - acts as a control center; directs all of the cell's activities.
- **Chromosomes**
  - Threadlike structures containing genetic information.
- **Nucleolus**
  - Involved in the assembly of ribosomes



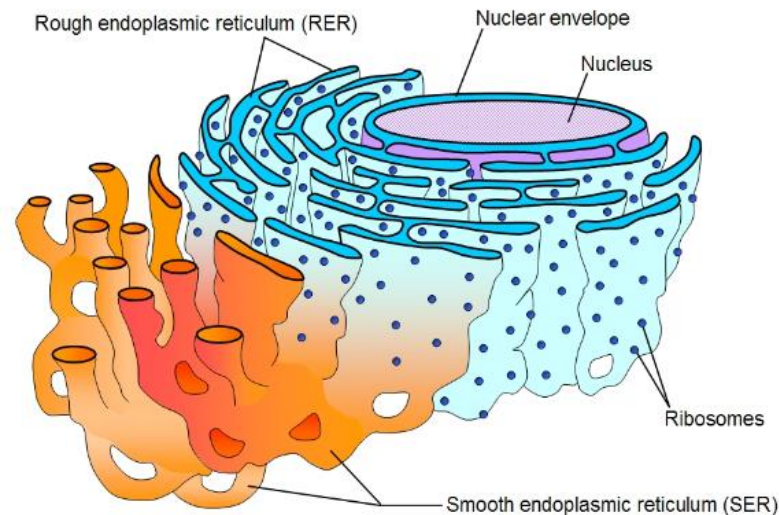
# Common Features

- **Cytoplasm:**
  - Material inside of cell membrane, surrounds all organelles.
- **Mitochondrion:**
  - Provides the cell with energy
  - Powerhouse of the cell
  - Glucose to energy (ATP)



# Common Features

- **Ribosome**
  - builds proteins and essential for cell growth and reproduction.
- **Endoplasmic reticulum:**
  - a series of canals/tubes that carry materials throughout the cell.
  - Smooth ER/Rough ER(ribosomes attached)



# Common Features

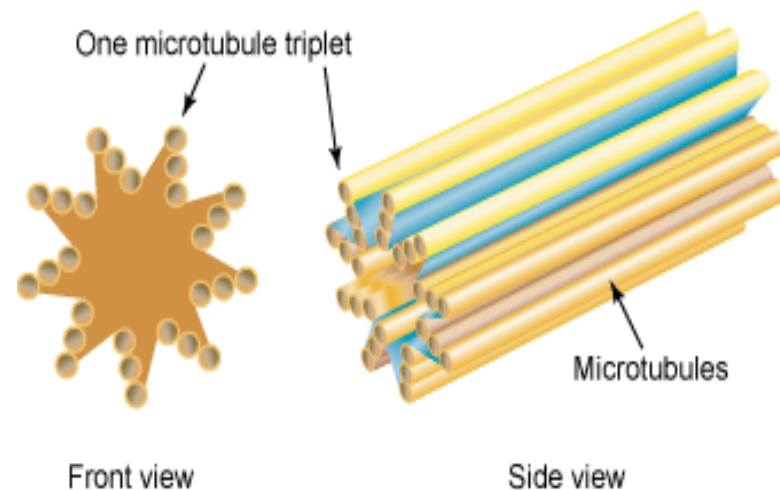
- Golgi apparatus:
  - Sorts and stores proteins from the ER.



- Vacuole:
  - Large fluid-filled space containing water, sugar, minerals and proteins.(much larger in plant)

# Unique Animal Features

- Lysosome:
  - contains enzymes that can break down material in the cell.
- Centriole:
  - small structure important to cell division (found only in animal cells).

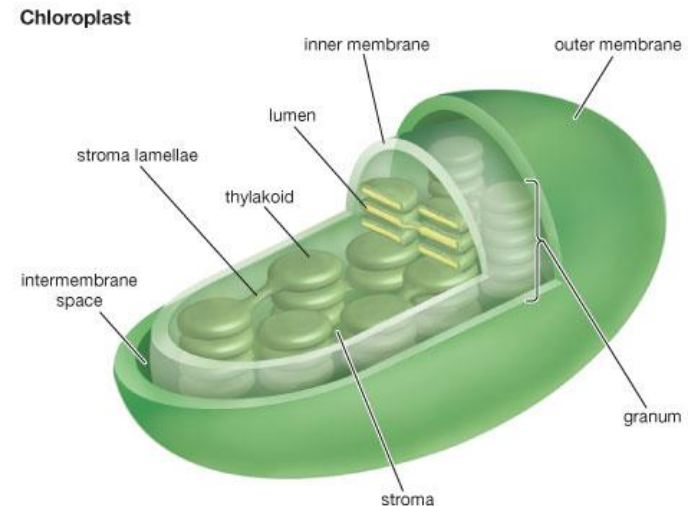


# Centriole

- Every animal-like cell has two small organelles called centrioles. They are there to help the cell when it comes time to divide. They are put to work in both the process of mitosis and the process of meiosis. You will usually find them near the nucleus but they cannot be seen when the cell is not dividing. And what are centrioles made of? Microtubules.

# Unique Plant Features

- Cell wall:
  - made up of cellulose it protects and supports the cell (helps it keep its shape)
- Chloroplast:
  - contains chlorophyll (green pigment) used in photosynthesis

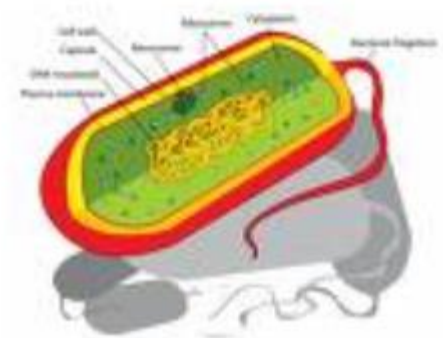


# How cells move

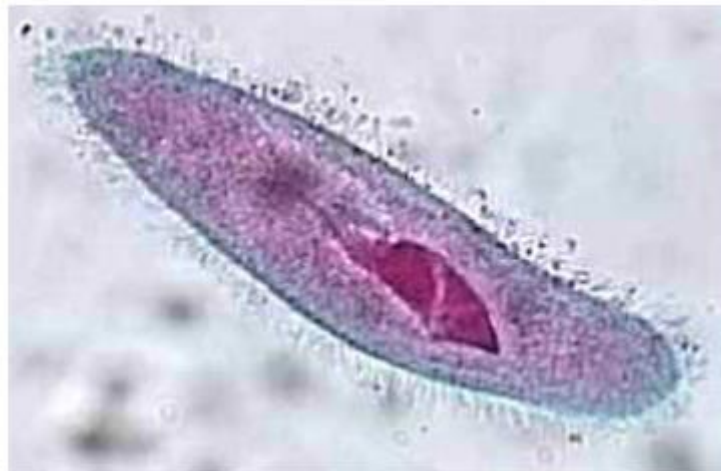


Cells have components outside of the cell membrane that help the cell move around. Two techniques are:

1) Flagellum is a whip like tail that helps the cell move



2) Cilia are hair like structures that move that cell or the cells surroundings



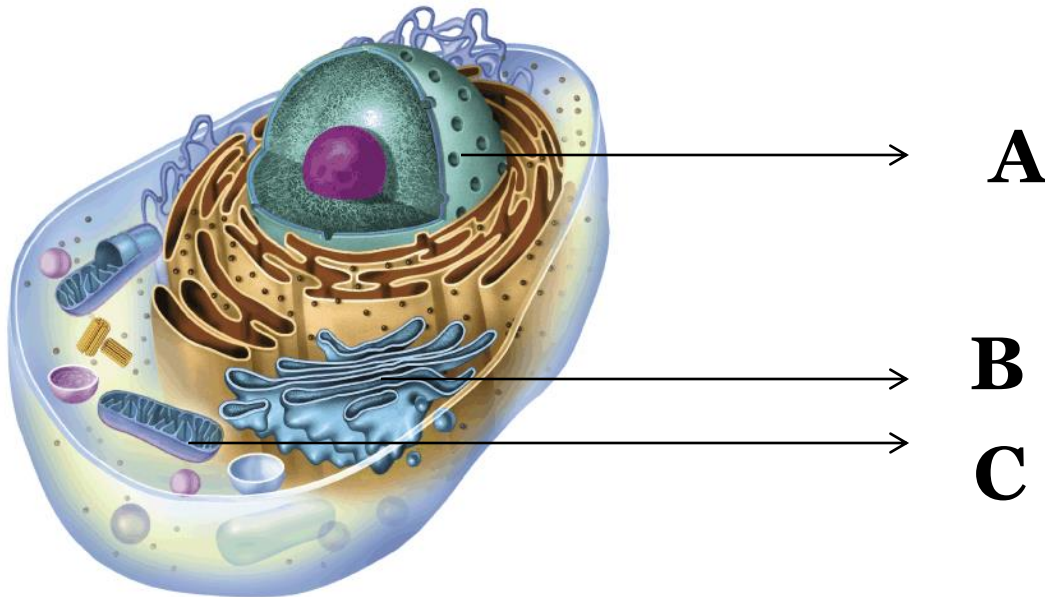
Bonus Cell  
Project  
Due Monday

# Cell City

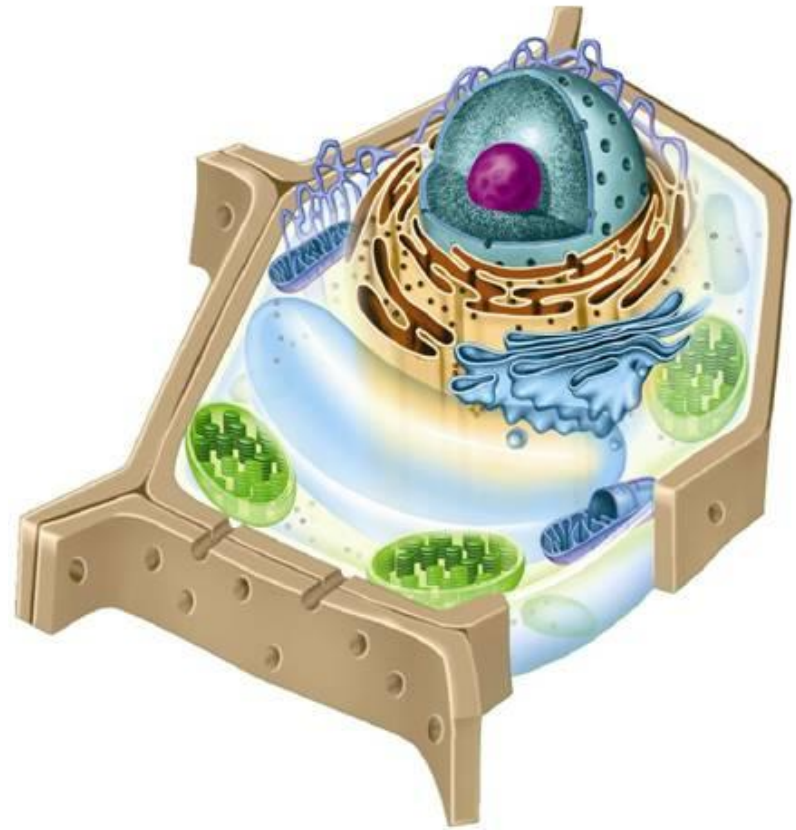
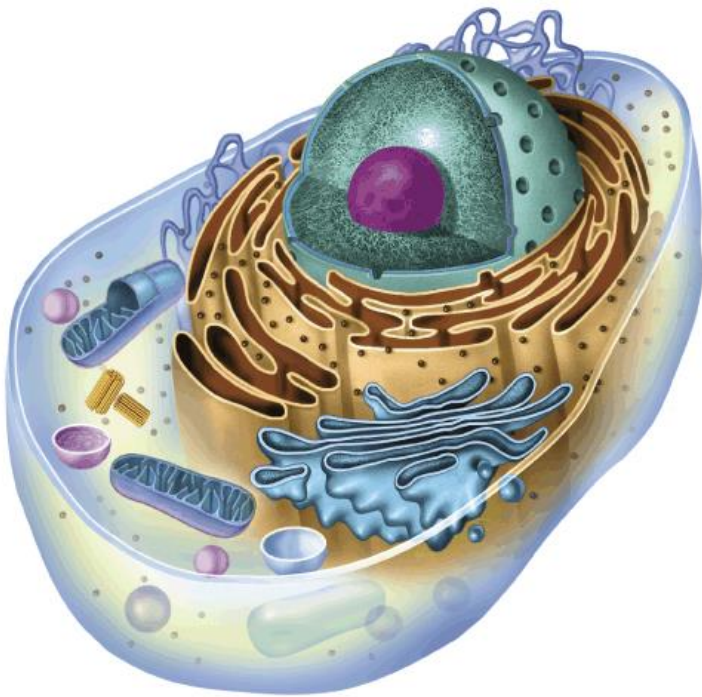


# Warm-Up!

- Label the following parts on the below animal cell



# Quiz Wednesday-Review



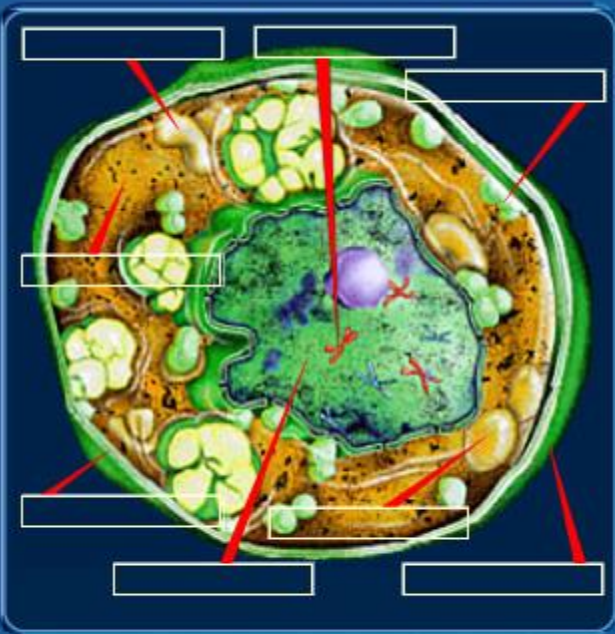
# Cell Stations

1. Parts of the plant and animal cell study guide
2. Animal and Plant cell matching activity & Cell Crossword
3. Definition review sheet

20 minutes at each station.

# Practice

**CELL INSPECTOR**



Identify all the key parts of the cell displayed on the microscope monitor by matching the correct cellular label to the correct cell part. If you want to learn about each cell

- MITOCHONDRIA
- CYTOPLASM
- CELL MEMBRANE
- CHROMOSOME
- NUCLEUS
- CELL WALL
- CHLOROPLAST
- VACUOLE

INFO    NEW CELL    HELP    CHECK





# CYU

## Take Screen Shot of:

1. Complete AC Game
2. Complete AC Quiz
3. Complete PC Game

