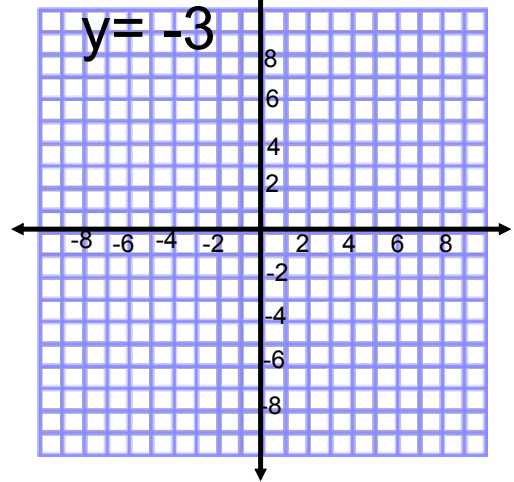
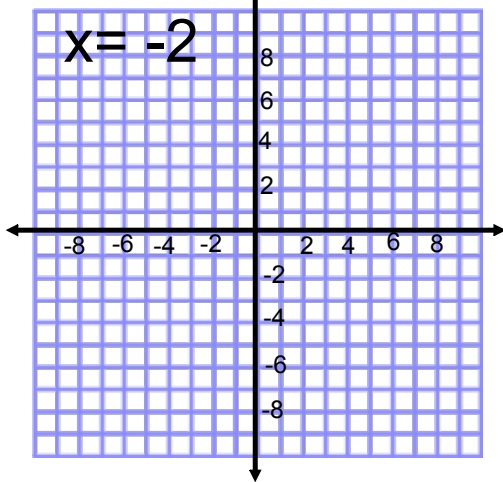
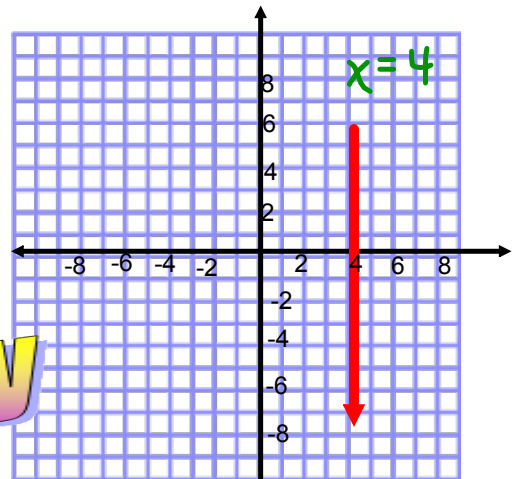
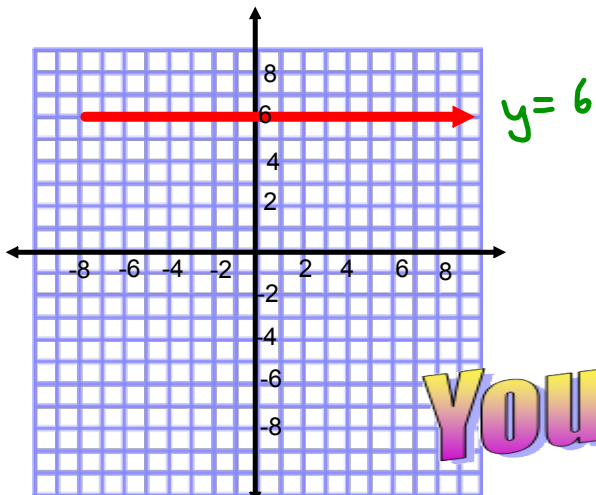
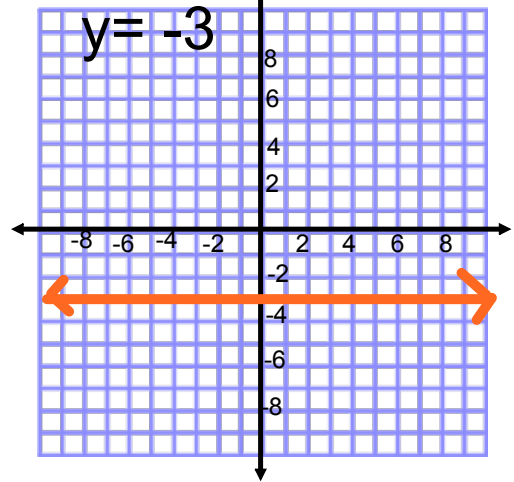
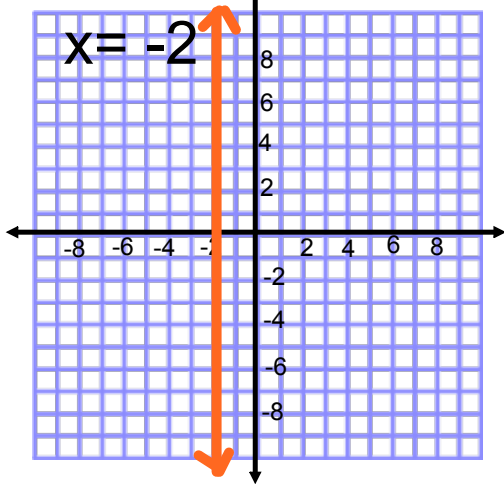


You try





You try



Graphing an Equation in the Form $ax + by = c$

$$y = \frac{\Delta y}{\Delta x} x + \#$$

For the equation $2x + 5y = 15$:

a) Rearrange first

$$2(x) + 5y = 15$$

$$5y = -2x + 15$$

$$\frac{5y}{5} = \frac{-2x}{5} + \frac{15}{5}$$

$$y = \frac{-2x}{5} + 3$$

$$\frac{\Delta y}{\Delta x} = \frac{-2}{5}$$

$\Delta x = 5$	$\Delta y = -2$
X	Y
-5	5
0	3
5	1

$\downarrow -2$
 $\downarrow -2$

$$y = \frac{-2(-5)}{5} + 3$$

$$y = \frac{10}{5} + 3$$

$$y = 2 + 3$$

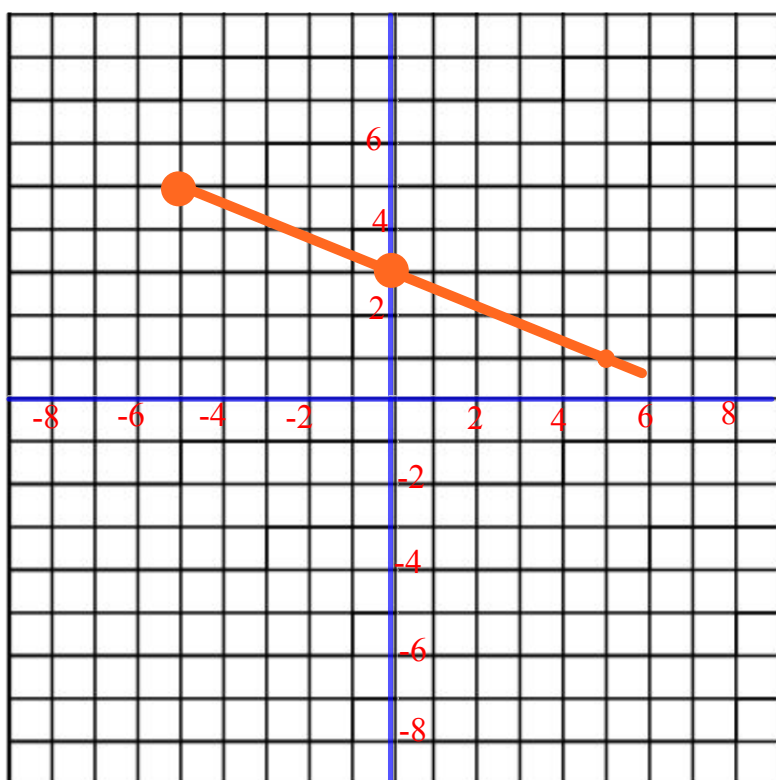
$$y = 5$$

$$y = \frac{-2(0)}{5} + 3$$

$$y = 0 + 3$$

$$y = 3$$

b) Graph the equation



X	Y
-5	5
0	3
5	1

$\Delta x = 5$ $\Delta y = -2$

5, -2
3, -2

Graphing an Equation in the Form $ax + by = c$

For the equation $2x - y = 6$

$$y = \frac{\Delta y}{\Delta x} x + \#$$

Make a table of values, and then graph.
Show all work

$$\cancel{1}y = \frac{-2x}{-1} + \frac{6}{-1}$$

$$y = \frac{2x}{1} - 6$$

x	y
-1	-8
0	-6
1	-4

$\Delta x = 1$ $\Delta y = 2$

) +2
) +2

$$y = 2(-1) - 6$$

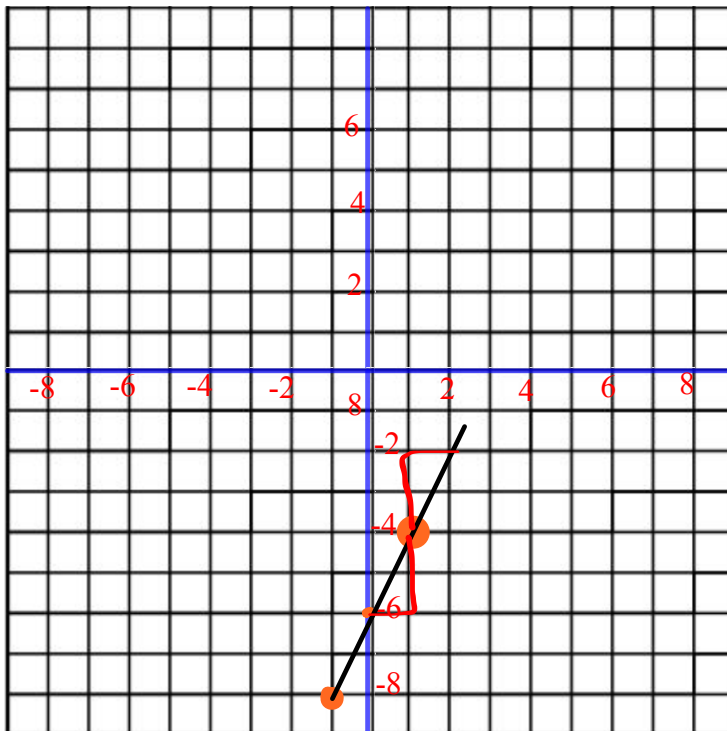
$$y = -2 - 6$$

$$y = -8$$

$$y = 2(0) - 6$$

$$y = 0 - 6$$

$$y = -6$$



Make a table of values, and then graph.
 Show all work

$$6x - 3y = 9$$

$$\frac{-3y}{-3} = \frac{-6x + 9}{-3}$$

$$y = \frac{2}{1}x - 3$$

$\Delta x = 1$ $\Delta y = 2$

x	y
-1	-5
0	-3
1	-1

) + 2
) + 2

$$y = 2(-1) - 3$$

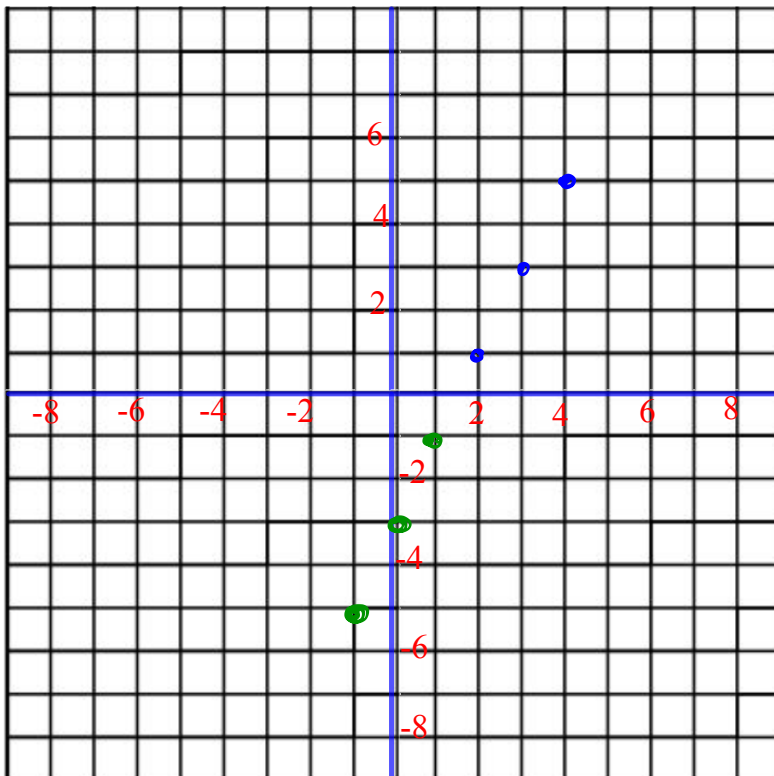
$$y = -2 - 3$$

$$y = -5$$

$$y = 2(0) - 3$$

$$y = 0 - 3$$

$$y = -3$$





Class/Homework



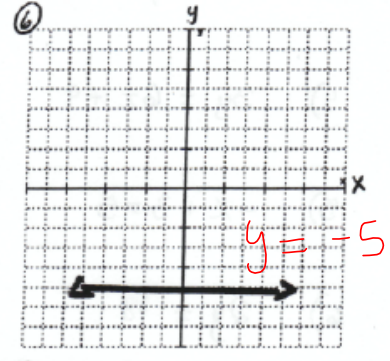
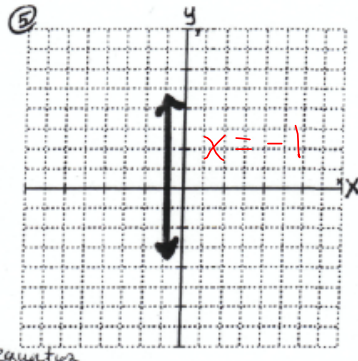
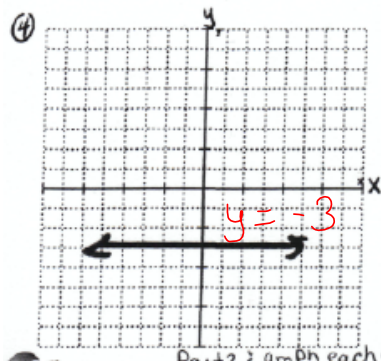
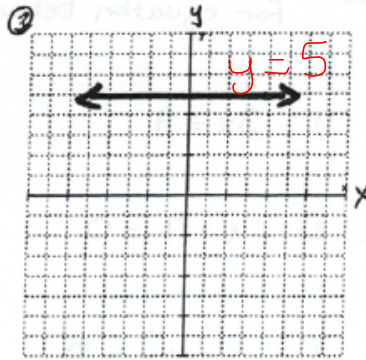
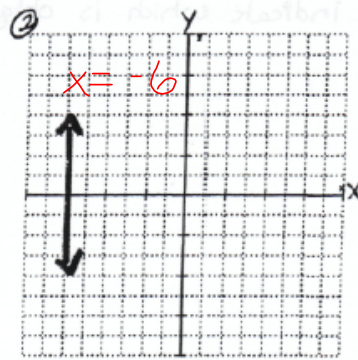
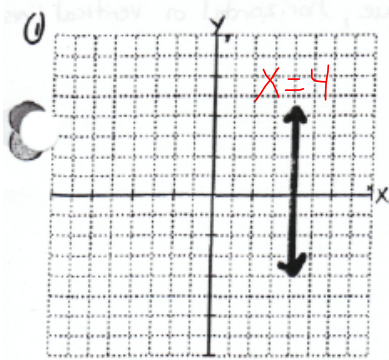
Worksheet



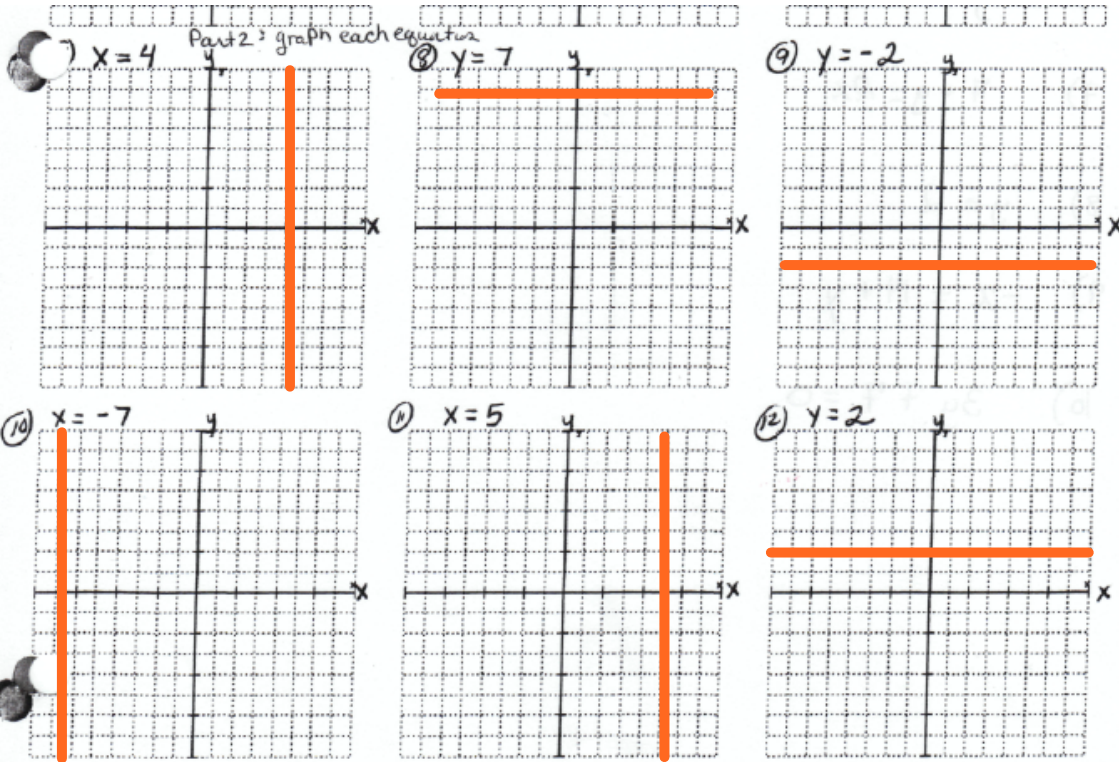
PAGE 178 - 180

4,5,6,7,8, 10 i, ii, 11, 15,

Part 1: Write the equation for each line



Write the equation for each line



2nd3

For equation below indicate which is oblique, horizontal or vertical lines.

1) $3x = 9$ ✓

2) $x + 7 = 0$ ✓

3) $-2x + y = 10$ ○

4) $3y = 6x + 9$ ○

5) $-x + 3 = 5$ ✓

6) $2y = 18$ H

7) $7 + y = 2x$ ○

8) $y = 2$ H

9) $-x = 14 + y$ ○

10) $3y + 7 = 0$ H

Attachments

Section 4.3 Worksheet.pdf