

HOMEWORK QUESTIONS... Solve (A-H) to A

10.7

6b)

$\triangle PQR : \angle R = 35^\circ$

$\angle Q = 90^\circ$

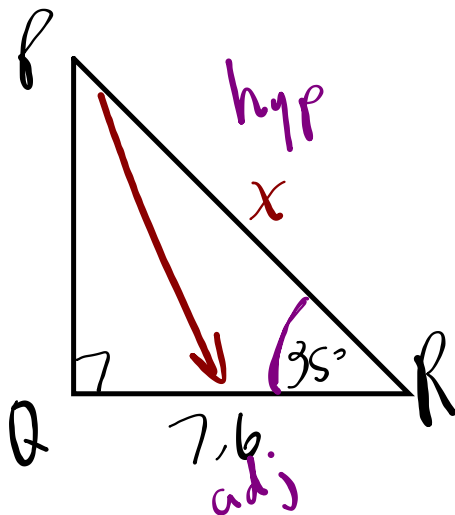
$RQ = 7.6$ or $p = 7.6$

$RP = ?$

$$\cos 35^\circ = \frac{7.6}{x}$$

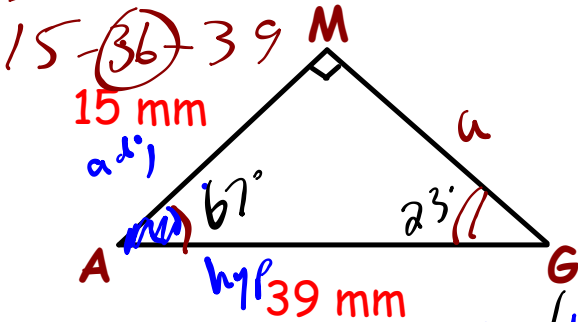
$$x = \frac{7.6}{\cos 35^\circ}$$

$$x = 9.28$$



EXAMPLE - Solve the triangle (find ALL sides and angles)

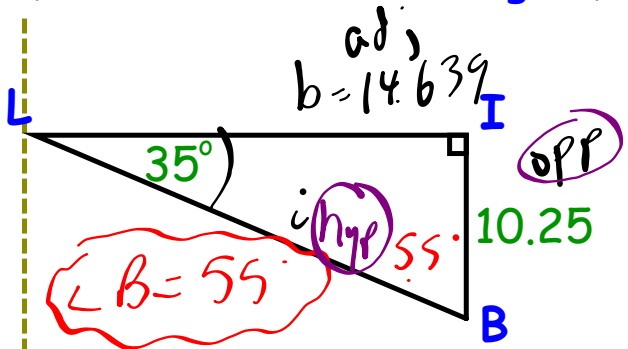
5-12-13



$$a = \sqrt{39^2 - 15^2} \quad \cos A = \frac{15}{39}$$

$a = 36$

$\angle A = 67^\circ$
 $\angle G = 23^\circ$



$$\tan 35^\circ = \frac{10.25}{b}$$

$$b = \frac{10.25}{\tan 35^\circ}$$

$b = 14.639$

$$\sin 35^\circ = \frac{10.25}{i}$$

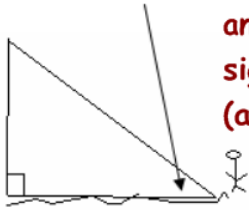
$$i = \frac{10.25}{\sin 35^\circ}$$

$i = 17.870$

Applications of Right Angle Trigonometry

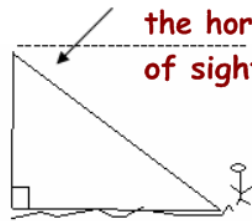
ANGLE OF ELEVATION/DEPRESSION

Angle of elevation - is the angle between the ground and the line of sight. (angle of inclination)



Always from the GROUND up

Angle of Depression - is the angle between the horizon and the line of sight.



Always outside the triangle

Example 1:

Two trees are 100m apart. From a point on midway between them, the angles of elevation to their tops are 8° and 13° . How much taller is one tree than the other?

$$\textcircled{1} \tan 8^\circ = \frac{x}{50}$$

$$\text{So } \tan 8^\circ = \frac{x}{50}$$

$$7.0 = x$$

$$\textcircled{2} \tan 13^\circ = \frac{y}{50}$$

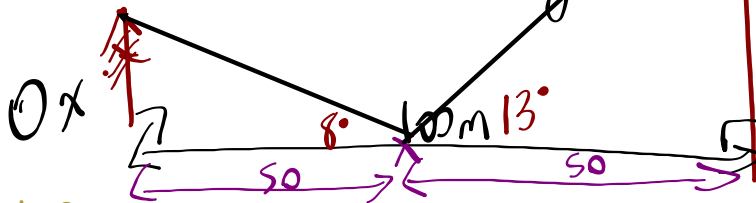
$$\text{So } \tan 13^\circ = \frac{y}{50}$$

$$11.5 = y$$

$$\textcircled{3} \text{Taller} = y - x$$

$$= 11.5 - 7$$

$$= 4.5 \text{ m}$$



Example 2:

The 8th floor of an apartment building is 25m above the ground. From the 8th floor, the angle of elevation to the top of the other building is 50° . The angle of depression to the base of the taller building is 34° . Determine the height of the taller building.

$$\textcircled{1} \tan 34^\circ = \frac{25}{y}$$

$$y = \frac{25}{\tan 34^\circ}$$

$$y = 37.1$$

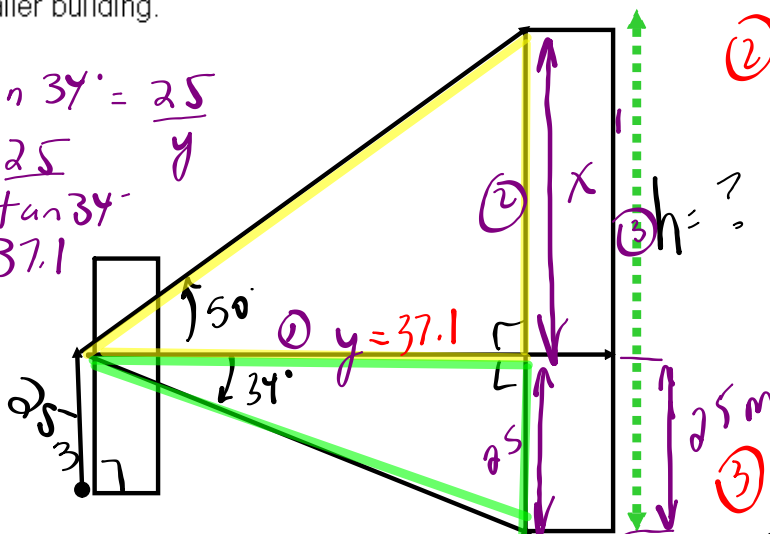
$$\textcircled{2} \tan 50^\circ = \frac{x}{37.1}$$

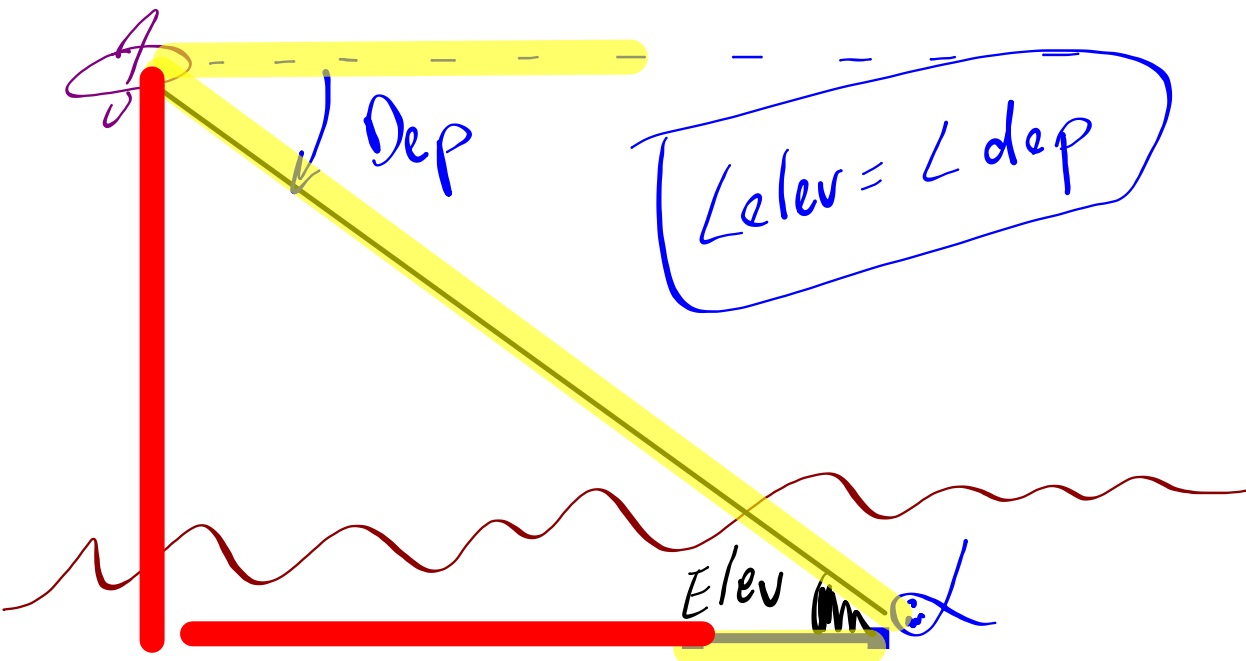
$$37.1 \tan 50^\circ = x$$

$$44.2 = x$$

$$\textcircled{3} h = 25 + 44.2$$

$$h = 69.2 \text{ m}$$





Exercise

HOMEWORK

SOLVE 10.7

#10, #11ac, #12ac

Word
Problems 10.8

#1, 3-6