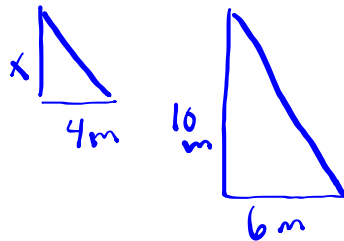
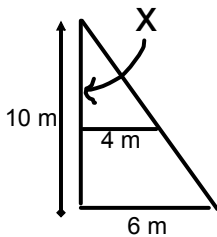


### Warm up

A photograph was taken of a person who is 5'6" tall (66" tall). In the photo the person is 3" tall. What is the scale factor?

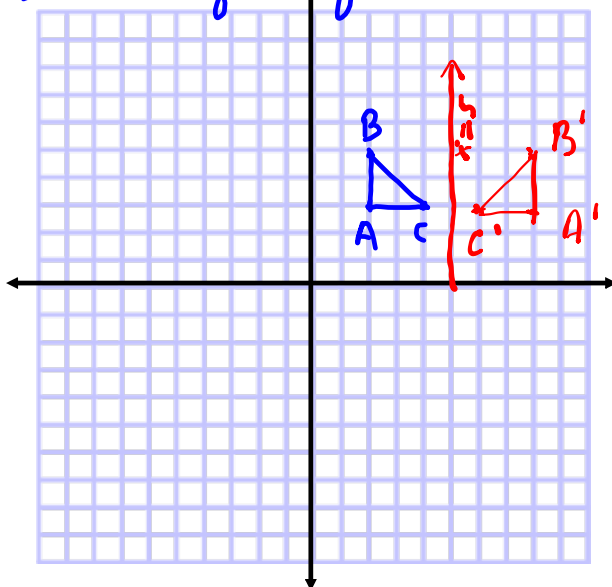
$$\begin{aligned} \text{S.F.} &= \frac{5}{0} \\ &= \frac{3}{66} \frac{\text{m}}{\text{ft}} \\ &= 0.045 \end{aligned}$$

Solve for x.



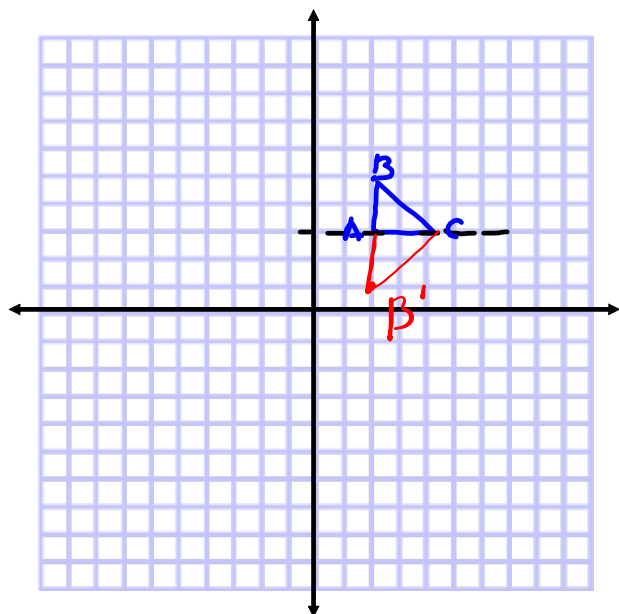
$$\begin{aligned} \cancel{10} \frac{x}{\cancel{10}} &= \frac{4(10)}{6} \\ x &= \frac{4(10)}{6} \\ &= \frac{40}{6} \\ &= 6.\bar{6} \text{ m} \end{aligned}$$

### Line of Reflection



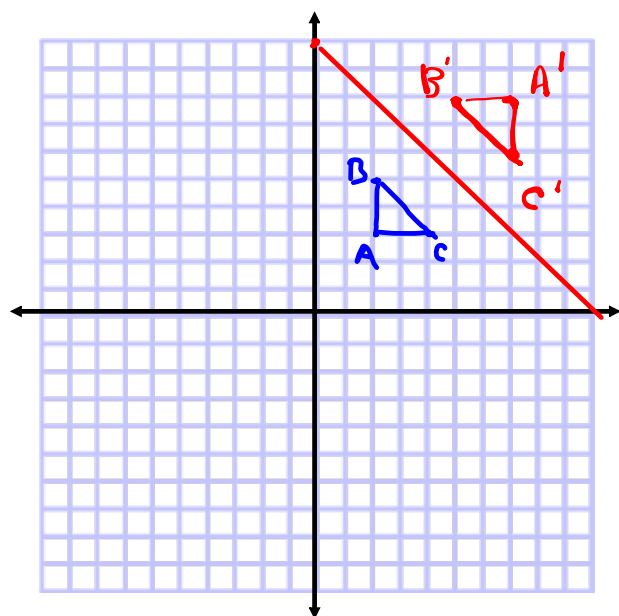
Line of Symmetry  
 $x = 5$

Point	Image
A (2,3)	(8,3) A'
B (2,5)	(8,5) B'
C (4,3)	(6,3) C'



Line of symmetry  
 $y = 3$

Point	Image
$A(2, 3)$	$(2, 3)$ $A'$
$B(2, 5)$	$(2, 1)$ $B'$
$C(4, 3)$	$(4, 3)$ $C'$



Line of symmetry  
 Oblique line  
 through  $(10, 0)$  and  $(0, 10)$

Point	Image
$A(2, 3)$	$A'(7, 8)$
$B(2, 5)$	$B'(5, 6)$
$C(4, 3)$	$C'(7, 6)$

Quiz...7.1, 7.2, 7.3, 7,4

Class / Homework

Page 358 - 359

4 - 11 omit #7

Page 354  
Notes