

$$\sin \theta = \frac{\text{opp}}{\text{hyp}}$$

$$= \frac{4}{5}$$

$$\sin \theta = 0.80$$

$$\theta = \sin^{-1} 0.80$$

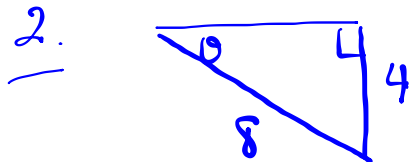
$$= 53^\circ$$

Formulas

$$\sin \theta = \frac{\text{opp}}{\text{hyp}}$$

$$\cos \theta = \frac{\text{adj}}{\text{hyp}}$$

$$\tan \theta = \frac{\text{opp}}{\text{adj}}$$

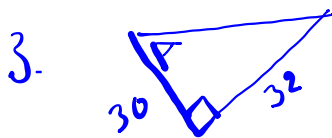


$$\sin \theta = \frac{\text{opp}}{\text{hyp}}$$

$$= \frac{4}{8}$$

$$\theta = \sin^{-1} 0.5$$

$$= 30^\circ$$



$$\tan \theta = \frac{\text{opp}}{\text{adj}}$$

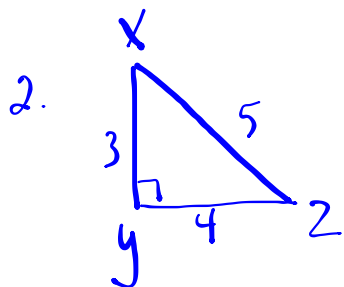
$$\tan A = \frac{32}{30}$$

$$A = \tan^{-1} (32/30)$$

$$= 47^\circ$$

Homework

1. $\tan 35^\circ = 0.7002$



$$\cos X = \frac{3}{5} \quad \begin{array}{l} \text{fraction} \\ \text{decimal} \end{array}$$

$$X = \cos^{-1} 0.6 \\ = 53^\circ$$

3. $\sin \theta = 0.6345$

$$\theta = \sin^{-1} 0.6345 \\ = 39^\circ$$