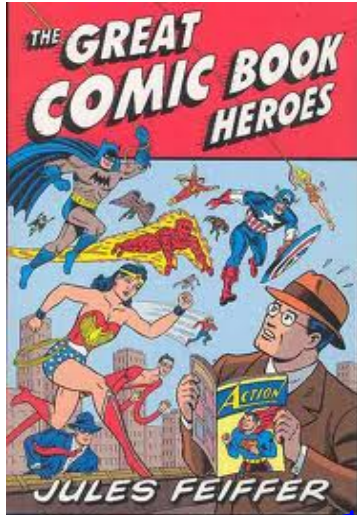


WARM-UP...



Ms. Ronan purchases an order of 425 comic books for \$700.00. She plans to mark the price up by 90%. What will she charge her customers for one comic book?

```
700/425
1.647058824
Ans*1.9
3.129411765
█
```

SOLUTION..
Delete to reveal

$$\begin{aligned} \$ \frac{700}{425} &= \$1.65 \\ 1.65 \times 1.90 &= \$3.14 \end{aligned}$$



Questions from the Homework???

1.3 Build Your Skills Detailed Solutions.pdf

click HERE to see detailed answers (if needed)

Copy these two notes...

promotion: an activity that increases awareness of a product or attracts customers

Common Discounts...

- 70 % off
- save \$30
- BOGO
- 1/2 price



EXAMPLE:

Jonas needs to buy a new winter jacket. He has waited for a sale, and a jacket that originally cost \$249.95 is now discounted 20%. How much will the jacket cost if Jonas lives in Nova Scotia, where HST is 15%?

This Way:

Focus... How much is taken off?

1) Find the discount

$$\begin{array}{r} \$249.95 \times 0.20 \\ \hline \$49.99 \end{array}$$

2) Find the sale price

$$\begin{array}{r} \$249.95 - \$49.99 \\ \hline \$199.96 \end{array}$$

3) Add the tax

$$\begin{array}{r} \$199.96 \times 1.15 \\ \hline \$229.95 \end{array}$$

That way:

Focus...

How much do you still have to pay?

1) Find the sale price

$$\begin{array}{r} \$249.95 \times 0.80 \\ \hline \$199.96 \end{array}$$

1 - % (decimal)

2) Add the tax

$$\begin{array}{r} \$199.96 \times 1.15 \\ \hline \$229.95 \end{array}$$



SOLUTION...

Delete to reveal

SOLUTION...

Delete to reveal

Copy these formulas...

What percent did you pay?

$$\frac{\text{Amount Paid}}{\text{Total Amount}} \times 100 \%$$

\$76.49 Sale Price

 \$89.99 Regular Price

$\frac{\$76.49}{\$89.99} = 0.85$
 85%

What percent did you save?

$$\frac{\text{Amount saved}}{\text{Total Amount}} \times 100 \%$$


 \$89.99 Regular Price
 \$76.49 Sale Price

$\frac{\$13.50}{\$89.99} = 0.15$
 15%

Rate of Discount

- is equal to...

$$\frac{\text{Amount of Discount}}{\text{Regular Price}} \times 100 \%$$

ex: Reg. \Rightarrow \$299.00
 Sale Price \Rightarrow \$279.00
 What is the rate of discount?


SOLUTION...
 Delete to reveal

Determine the **rate of discount** in each of the following...

HP PAVILION LAPTOP
 AMD Turion™ 64 X2 Mobile Technology T1-64
 • 3 GB memory, 320 GB hard drive (1)
 • DVD Super Multi drive with HD DVD
 • Wireless A/B/G/N, FireWire, HDMI
 • 22.6 MB NVIDIA GeForce 9450M GS
 OS: Windows Vista Home Basic
 MODEL: J44730EA
SAVE \$380
899.96
MSRP \$1279.96

SOLUTION...
 SOLUTION...
 Delete to reveal

$\frac{+380}{1279.96}$ Rate = 30 %


 Simoniz® S1900
 Electric Pressure
 Washer
 Sale: \$229.99
 Reg: \$349.99
 1/3 Off

Rate = 33 %

SOLUTION...
 Delete to reveal

166-piece socket set
 #58-9225-6
 Sale: \$48.88
 Reg: \$179.99
 Save 70%

Rate = 70 %

$$\begin{array}{r} 3.79 \\ - 2.99 \\ \hline 0.80 \\ \frac{0.80}{3.79} = 21\% \end{array}$$

Tostitos Doritos
 WAS 3.79
2.99
 Doritos tortilla chips
 Tostitos or Ruffles potato chips
 selected varieties, 400-440 g

Rate = 21 %

HOMEWORK

Page 37 Questions 1 to 7.



1.4 Build Your Skills Detailed Solutions.pdf



Attachments

1.3 Build Your Skills Detailed Solutions.pdf

1.4 Build Your Skills Detailed Solutions.pdf