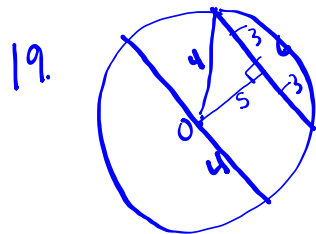
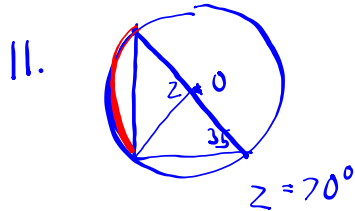
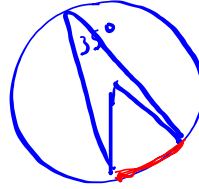
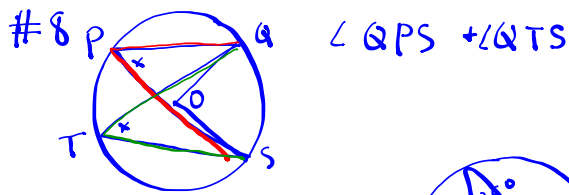


Exam Review Chp 8 (or other)



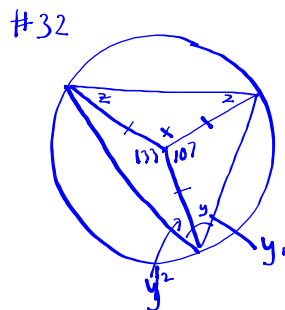
$$S^2 = 4^2 - 3^2$$

$$= 16 - 9$$

$$= 7$$

$$S = \sqrt{7}$$

$$= 2.6$$



$$X = 360 - 133 - 107$$

$$= 120^\circ$$

$$z = \frac{180 - 120}{2}$$

$$= 30^\circ$$

$$y_1 = \frac{180 - 107}{2}$$

$$= 36.5$$

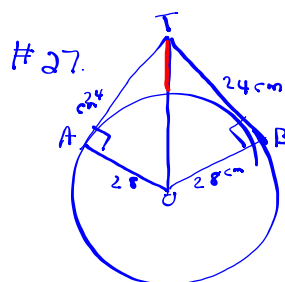
$$y_2 = \frac{180 - 133}{2}$$

$$= 23.5$$

$$y = y_1 + y_2$$

$$= 36.5 + 23.5$$

$$= 60$$



$$TO^2 = 24^2 + 28^2$$

$$= 576 + 784$$

$$= 1360$$

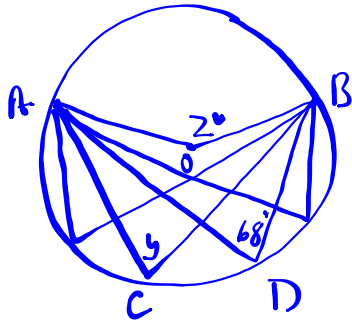
$$TO = \sqrt{1360}$$

$$= 36.9 \text{ cm}$$

$$\text{Ans} = 36.9 - 28$$

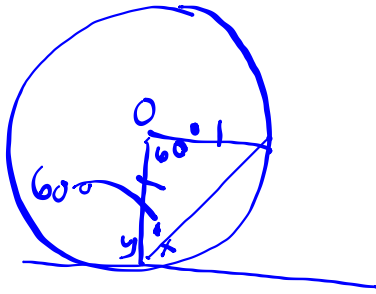
$$= 8.9 \text{ cm}$$

24.



$$z = 2(68) \text{ CIAP} \\ = 136^\circ$$

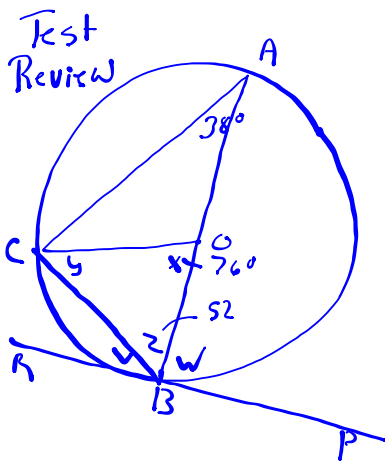
$$y = 68^\circ \text{ IAP}$$



$$y = 90^\circ \text{ TRP}$$

$$x = \frac{180 - 60}{2} \text{ ITT} \\ = 60$$

$$x = 90 - 60 \text{ CAT} \\ = 30^\circ$$



$$x = 2(38) \text{ CIAP} \\ = 76^\circ$$

$$y = 52^\circ \text{ ITT SATT}$$

$$z = 52^\circ \text{ ITT SATT}$$

$$w = 90^\circ \text{ TRP}$$

$$v = 90 - 52 \text{ CAT} \\ = 38^\circ$$

Chp 6 #16

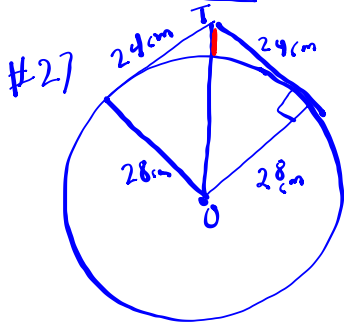
$$3x + 5 = 18$$

$$3x + 5 - 5 = 18 - 5$$

$$\frac{3x}{3} = \frac{13}{3}$$

$$x = 5$$

Period 5



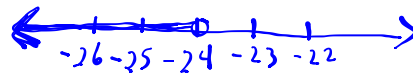
$$\begin{aligned}
 c^2 &= a^2 + b^2 \\
 &= 28^2 + 24^2 \\
 &= 784 + 576 \\
 &= 1360 \\
 c &= \sqrt{1360} \\
 &= 36.9
 \end{aligned}$$

$$\begin{aligned}
 \text{distance} &= 36.9 - 28 \\
 &= 8.9 \text{ cm}
 \end{aligned}$$

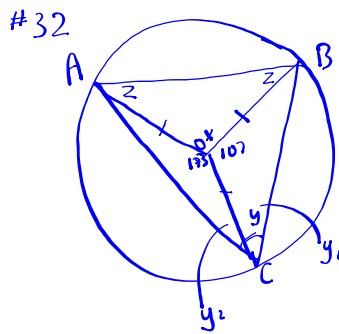
Unit 6

#13

$$\begin{aligned}
 12t - 8 &< 16 + 13t \\
 -13t & \quad +8 \quad +8 \\
 12t &< 24 + 13t \\
 -t &< 24 \\
 -1 & \quad -1 \\
 t &> -24
 \end{aligned}$$



Unit 8



$$\begin{aligned}
 x &= 360 - 133 - 107 \\
 &= 120^\circ \\
 z &= \frac{180 - 120}{2} \\
 &= 30^\circ \\
 y_1 &= \frac{180 - 107}{2} \\
 &= 36.5^\circ \\
 y_2 &= \frac{180 - 133}{2} \\
 &= 23.5^\circ \\
 y &= y_1 + y_2 \\
 &= 36.5 + 23.5 \\
 &= 60^\circ
 \end{aligned}$$

Unit 6

27.

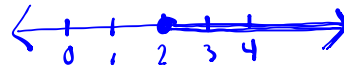
$$\begin{aligned}
 \frac{2}{3}(x+2) - \frac{1}{2}(x-4) &> \frac{1}{4}(x+5) \\
 8(x+2) - 6(x-4) &> 3(x+5) \\
 8x + 16 - 6x + 24 &> 3x + 15 \\
 2x + 40 &> 3x + 15 \\
 -3x & \quad -3x \\
 2x &> 3x - 25 \\
 -x &> -25 \\
 -1 & \quad -1 \\
 x &< 25
 \end{aligned}$$

Unit 6

$$20. \quad 8w - 4 \geq 7w - 2$$

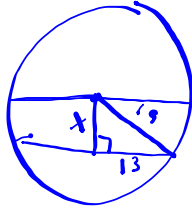
$$8w \geq 7w + 2$$

$$w \geq 2$$



Unit 8

31.



$$a^2 = c^2 - b^2$$

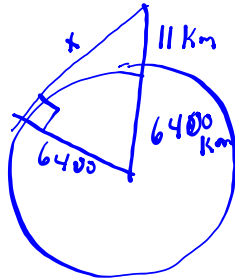
$$x^2 = 19^2 - 13^2$$

$$= 192$$

$$x = \sqrt{192}$$

$$= 13.8 \text{ cm}$$

26.



$$a^2 = c^2 - b^2$$

$$x^2 = 6411^2 - 6400^2$$

$$= 140921$$

$$x = \sqrt{140921}$$

$$= 375.4 \text{ km}$$