

## Right angled triangles ratios

sine  $\theta = \frac{\text{opposite}}{\text{hypotenuse}}$

short form

$$\sin \theta = \frac{\text{opp}}{\text{hyp}}$$

cosine  $\theta = \frac{\text{adjacent}}{\text{hypotenuse}}$

$$\cos \theta = \frac{\text{adj}}{\text{hyp}}$$

tangent  $\theta = \frac{\text{opposite}}{\text{adjacent}}$

$$\tan \theta = \frac{\text{opp}}{\text{adj}}$$

acronym..... **SOH CAH TOA**

Apr 27-7:51 AM

### Trigonometric Ratios

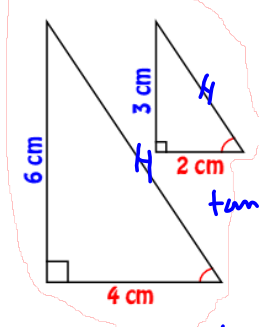
- Each angle has a specific trigonometric ratio

ie.  $\tan 56^\circ = 1.4826$  (ALWAYS carry 4 decimal places!!)

$$\cos 50^\circ = 0.6428$$

These ratios will be found using a scientific calculator

Look at these two triangles...they are similar.



Even though these triangles are different sizes, the ratios of their sides would be equal.

This confirms that as long as the angles are the same measure, the trigonometric ratios will be the same.

$$\begin{aligned} \tan \theta &= \frac{\text{opp}}{\text{adj}} \\ &= \frac{6}{4} \\ \tan \theta &= 1.5 \\ \theta &= \tan^{-1}(1.5) \\ &= 56^\circ \end{aligned}$$

$$\begin{aligned} \frac{\tan \theta}{\tan} &= \frac{1.5}{\tan} \\ \theta &= \tan^{-1} 1.5 \end{aligned}$$

Mar 10-11:44 PM

$\tan \theta = \frac{\text{opp}}{\text{adj}} = \frac{x}{z}$

$\cos \theta = \frac{\text{adj}}{\text{hyp}} = \frac{z}{y}$

$\tan \theta = \frac{\text{opp}}{\text{adj}} = \frac{z}{x}$

$\cos \theta = \frac{\text{adj}}{\text{hyp}} = \frac{x}{y}$

Apr 27-8:46 AM

## Trigonometric Ratios

\*\*\* Must have calculator in DEGREE mode \*\*\*

HYPOTENUSE

OPPOSITE

ADJACENT

$\sin \theta = \frac{\text{opp}}{\text{hyp}}$

$\cos \theta = \frac{\text{adj}}{\text{hyp}}$

$\tan \theta = \frac{\text{opp}}{\text{adj}}$

"These are called the *Primary Trig Ratios*"

REMEMBER: "SOH CAH TOA"

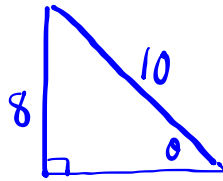
Jan 31-3:49 PM

## Examples

$$1. \quad \cos 74^\circ = 0.2756$$

$$2. \quad \begin{aligned} \sin \theta &= 0.5 \\ \theta &= \sin^{-1}(0.5) \\ &= 30^\circ \end{aligned}$$

3.



$$\begin{aligned} \sin \theta &= \frac{\text{opp}}{\text{hyp}} \\ &= \frac{8}{10} \\ \theta &= \sin^{-1} 0.8 \\ &= 53^\circ \end{aligned}$$

Apr 27-8:57 AM

## Homework...

$$\begin{aligned} \frac{x}{4} &= \frac{3}{7} \rightarrow x = \frac{3(4)}{7} \\ &= \frac{12}{7} \\ \frac{7x}{7} &= \frac{4(3)}{7} \\ x &= \frac{12}{7} \end{aligned} \quad \left. \begin{aligned} \frac{4}{x} &= \frac{15}{6} \\ \frac{15x}{15} &= \frac{4(6)}{15} \\ x &= \frac{24}{15} \\ &= \frac{8}{5} \end{aligned} \right\}$$

Apr 27-8:54 AM