

Problems with the homework?

MMS9:

PAGE 397: #3 TO #6

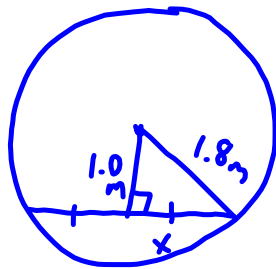
PAGE 398: #7, #9 to #12

PAGE 399: #13, 14, 15, 17, 18 & 19

PAGE 403: #4 TO #7

PAGE 419: #5 TO #8 } later

#18.



$$a^2 = c^2 - b^2$$

$$x^2 = 1.8^2 - 1^2$$

$$= 3.24 - 1$$

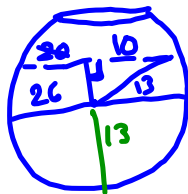
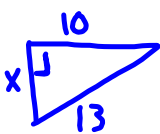
$$= 2.24$$

$$x = \sqrt{2.24}$$

$$= 1.5$$

width
of path = $2(1.5)$
= 3.0 m

#19.



$$a^2 = c^2 - b^2$$

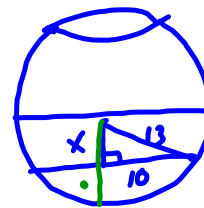
$$x^2 = 13^2 - 10^2$$

$$= 169 - 100$$

$$= 69$$

$$x = \sqrt{69}$$

$$= 8.3$$

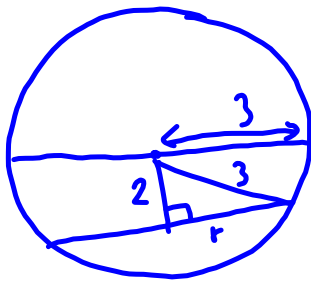


$x = 8.3$ cm
Depth
= $13 - 8.3$
= 4.7 cm

Depth = $8.3 + 13$
= 21.3 cm

p. 398

7. a)



$$a^2 = c^2 - b^2$$

$$r^2 = 3^2 - 2^2$$

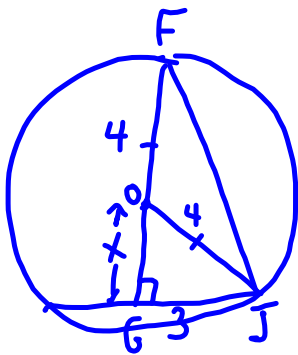
$$= 9 - 4$$

$$= 5$$

$$r = \sqrt{5}$$

$$= 2.2$$

10 b)



$$a^2 = c^2 - b^2$$

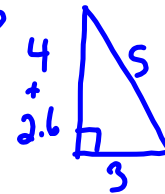
$$GO^2 = 4^2 - 3^2$$

$$= 16 - 9$$

$$= 7$$

$$GO = \sqrt{7}$$

$$= 2.6$$



$$c^2 = a^2 + b^2$$

$$S^2 = 6.2^2 + 3^2$$

$$= 43.56 + 9$$

$$= 52.56$$

$$S = \sqrt{52.56}$$

$$= 7.2$$

In class assignment

May 9

Sections 8.1 & 8.2

Work is to be done individually. **No working together.**

Work must be shown for all questions including the multiple choice.

Extra help is available at lunch.

Section 8.1_8.2 In class assignment.pdf