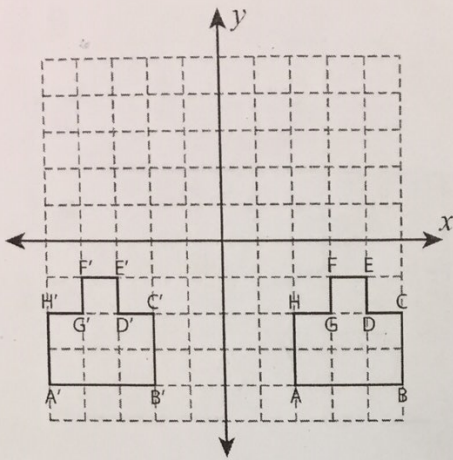
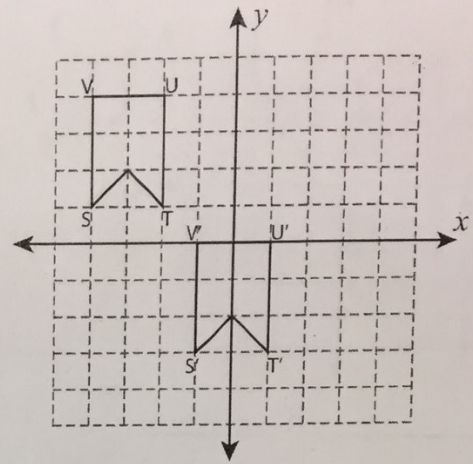


Write a rule to describe each translation.

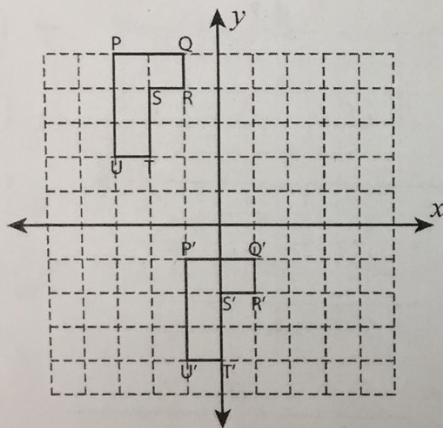
1)



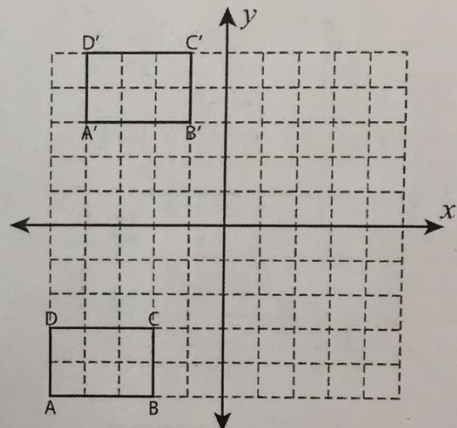
2)



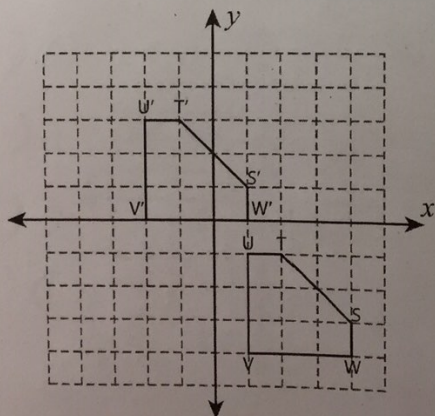
3)



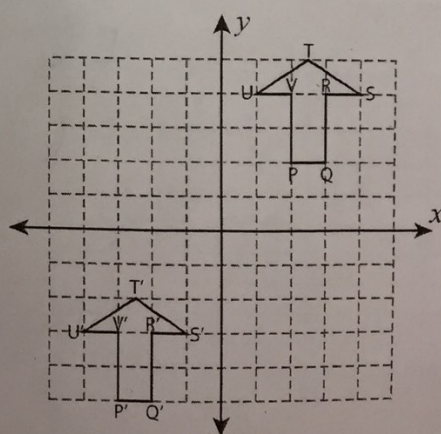
4)



5)



6)

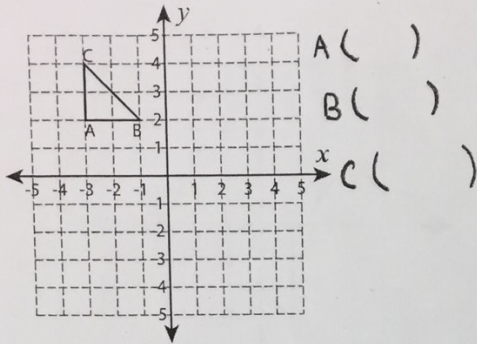


Write the New Coordinates

Sheet 1

Graph the image of each figure after the given translation. Also write the coordinates of the image.

1) 1 unit down and 4 units right

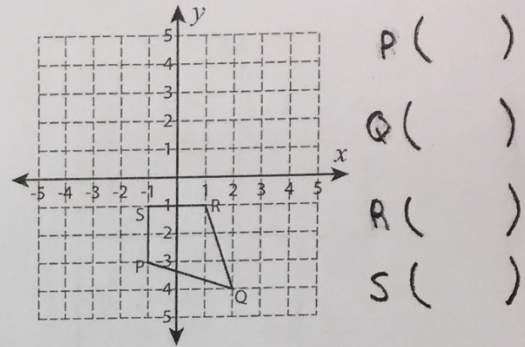


A ()
B ()
C ()

A': _____, B': _____

C': _____

2) 2 units right and 5 units up

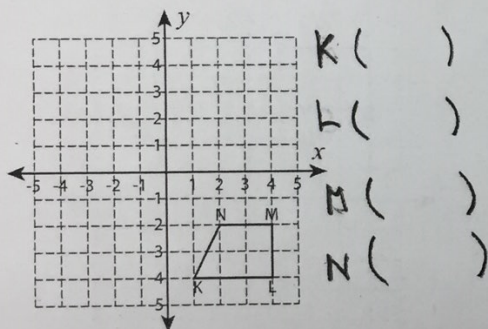


P ()
Q ()
R ()
S ()

P': _____, Q': _____

R': _____, S': _____

3) 6 units up and 6 units left

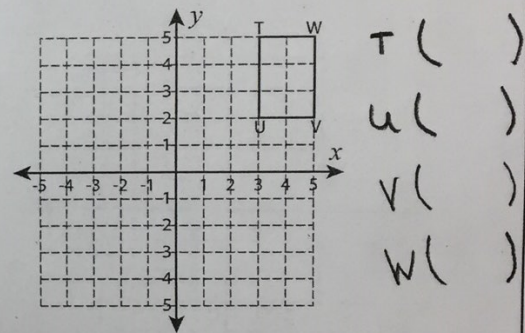


K ()
L ()
M ()
N ()

K': _____, L': _____

M': _____, N': _____

4) 8 units left and 7 units down

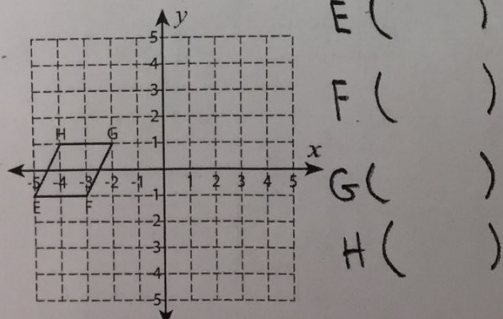


T ()
U ()
V ()
W ()

T': _____, U': _____

V': _____, W': _____

5) 7 units right

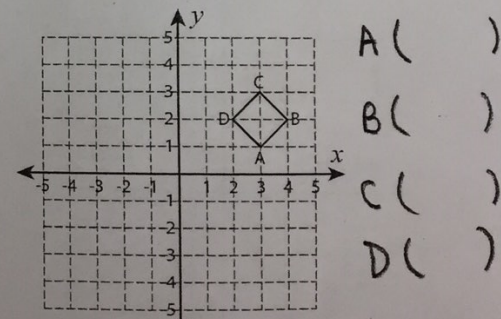


E ()
F ()
G ()
H ()

E': _____, F': _____

G': _____, H': _____

6) 4 units down and 6 units left



A ()
B ()
C ()
D ()

A': _____, B': _____

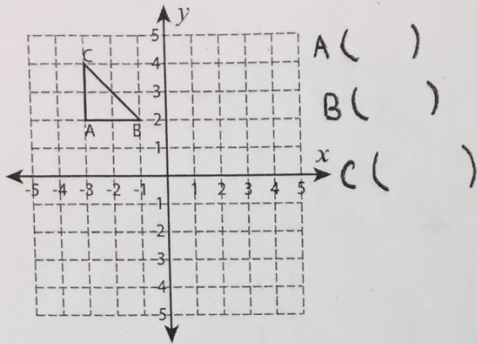
C': _____, D': _____

Write the New Coordinates

Sheet 1

Graph the image of each figure after the given translation. Also write the coordinates of the image.

1) 1 unit down and 4 units right

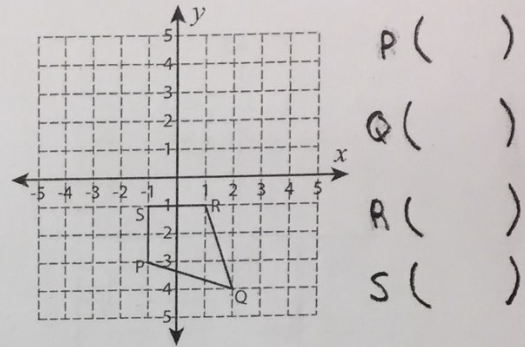


A ()
B ()
C ()

A': _____, B': _____

C': _____

2) 2 units right and 5 units up

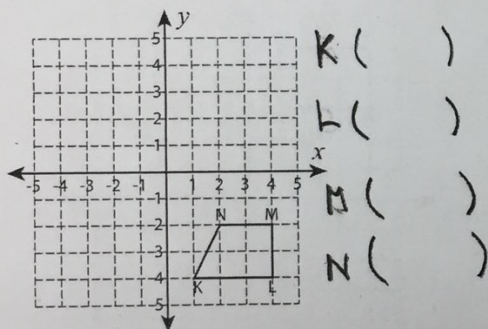


P ()
Q ()
R ()
S ()

P': _____, Q': _____

R': _____, S': _____

3) 6 units up and 6 units left

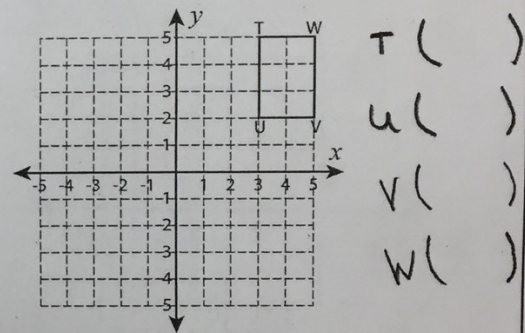


K ()
L ()
M ()
N ()

K': _____, L': _____

M': _____, N': _____

4) 8 units left and 7 units down

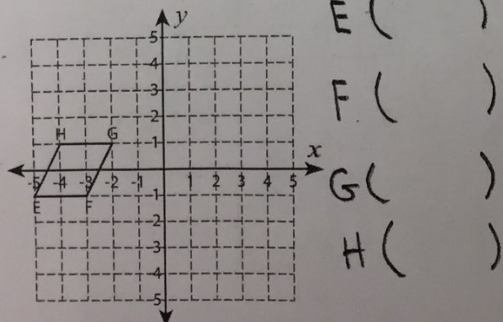


T ()
U ()
V ()
W ()

T': _____, U': _____

V': _____, W': _____

5) 7 units right

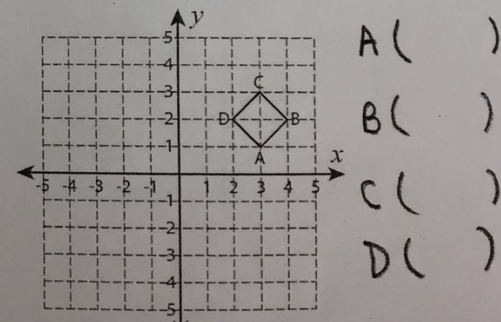


E ()
F ()
G ()
H ()

E': _____, F': _____

G': _____, H': _____

6) 4 units down and 6 units left

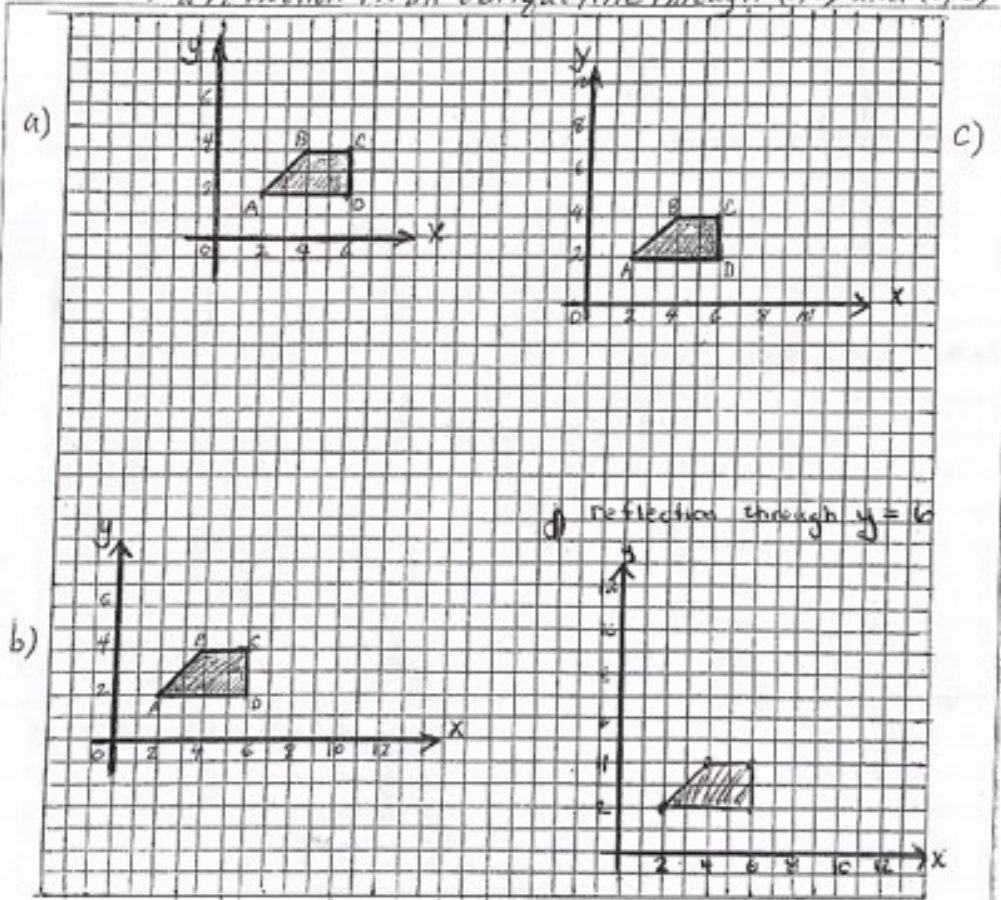


A ()
B ()
C ()
D ()

A': _____, B': _____

C': _____, D': _____

- Completing a shape with rotational symmetry
- Draw the image after each reflection
 - Write the coordinates of ABCD and its image
 - Describe the larger shape and its symmetry
 - a) reflection in horizontal line through 2 on the y-axis
 - b) reflection in the vertical line through 6 on the x-axis
 - c) a reflection in an oblique line through (0, 6) and (6, 6)



a)

Point	Image
A ()	A' ()
B ()	B' ()
C ()	C' ()
D ()	D' ()

b)

Point	Image
A ()	
B ()	
C ()	
D ()	

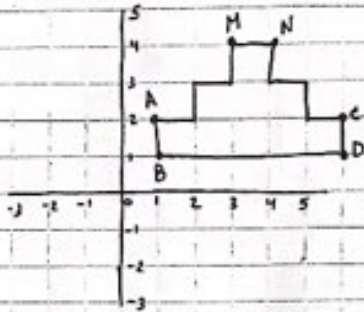
c)

Point	Image
A ()	
B ()	
C ()	
D ()	

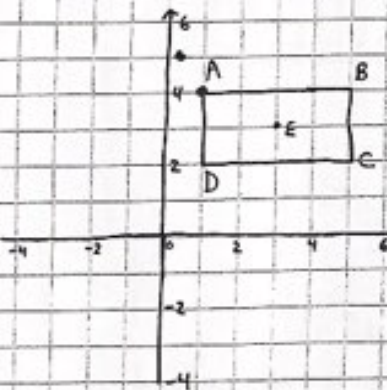
d)

Point	Image
A ()	
B ()	
C ()	
D ()	

- a) State the shape i) 90° counter clockwise about point (B)
 ii) 270° counter clockwise about point (B)
 iii) 180° about point (B)



- b) Rotate the shape i) 90° about E(3,3)
 ii) 90° about A(1,4)
 iii) 180° about B(5,4)



Rotate 270° about M

