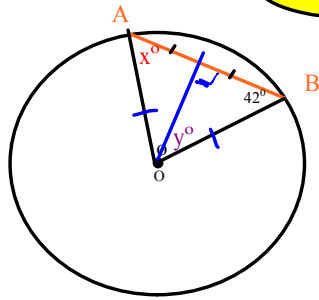


Warm up

May 15, 2017



Determine the value of  $x^\circ$  and  $y^\circ$   
 SHOW YOUR WORK  
 (or give justification)

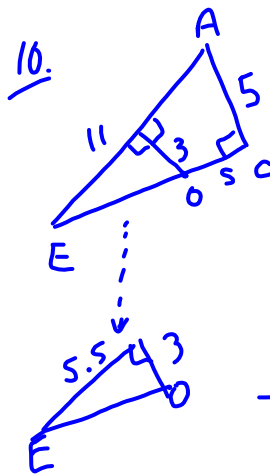
For X

$x = 42^\circ$  isosceles triangle

For Y

$y = 180 - 90 - 42$   
 $= 48^\circ$

Homework  
 Page 398



$$a^2 = c^2 - b^2$$

$$EC^2 = 11^2 - 5^2$$

$$= 121 - 25$$

$$= 96$$

$$EC = \sqrt{96}$$

$$= 9.8$$

---


$$EO^2 = 5.5^2 + 3^2$$

$$= 30.25 + 9$$

$$= 39.25$$

$$EO = \sqrt{39.25}$$

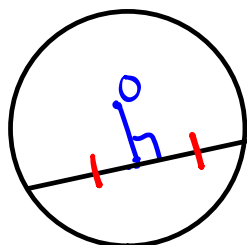
$$= 6.3$$

$$S = 9.8 - 6.3$$

$$= 3.5$$

Three characteristics...

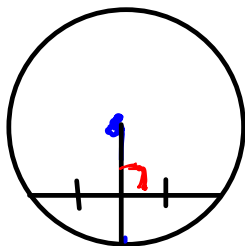
1. Bisection a chord
- ✓ 2. Meets chord at  $90^\circ$
- ✓ 3. Goes through the center of the circle



If you have two then the third is also true.

Three characteristics...

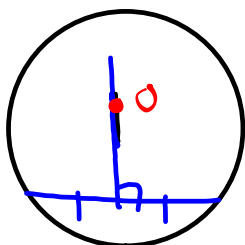
- ✓ 1. Bisections a chord
- ✓ 2. Meets chord at  $90^\circ$
- ✓ 3. Goes through the center of the circle



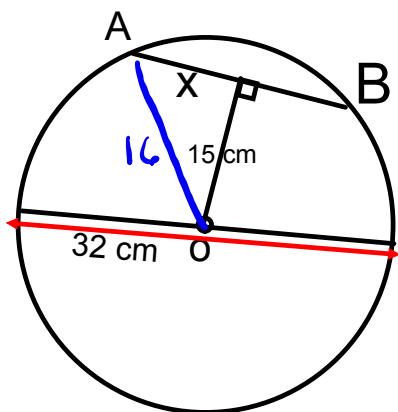
If you have two then the third is also true.

Three characteristics...

- ✓ 1. Bisections a chord
- ✓ 2. Meets chord at  $90^\circ$
- ✓ 3. Goes through the center of the circle



If you have two then the third is also true.



Determine the length of x

SHOW YOUR WORK

$$\begin{aligned}a^2 &= c^2 - b^2 \\x^2 &= 16^2 - 15^2 \\&= 256 - 225 \\&= 31 \\x &= \sqrt{31} \\&= 5.6 \text{ cm}\end{aligned}$$



Homework :

p. 403

- 1
- 2
- 3
- 4
- 5
- 6
- 7

