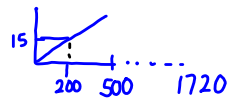


Questions from the homework?

Review exercise & Practice test pp. 201-204

Page 203

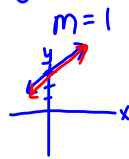


$$\frac{1720}{200} = 8.6$$

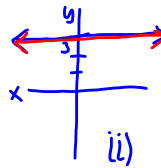
$$8.6 \times 15 = 129$$

Page 204

4. a) $y = x + 3$ i)



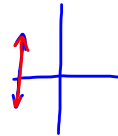
b) $y = 3$



c) $x + y = 3^{-x}$
 $y = -x + 3$



d) $x = -3$



Practice Exercises 3-5